



2025
APPAREL COLLECTION



INDEPENDENT TRADING COMPANY

Quality Sweatshirts...It's Our Mission.

Leading manufacturer and supplier of high quality blank & custom apparel since 1987.

Building on our roots in the action sports industry since 1987, Independent Trading Company is established as a leading manufacturer and supplier of high quality Custom & Blank apparel for Screen Printers and Brands all over the world. Our collection of blanks, ranging from Sweatshirts to Performance Fleece, Jackets, and Fleece Bottoms is readily available in over 60 styles with a wide range of colors. All styles are produced in high quality fabrics for supreme results when printing or embellishing. We

provide extensive at-once inventory in two locations, California & Pennsylvania, as well as distributors throughout the USA. In addition to domestic distributors, we also have distributors in Canada, Australia, Chile, Germany, Japan, The UK, Brazil, and Mexico. It's our mission to supply the best quality products for our customers and develop long lasting relationships. Many of our best customers are our first customers.



“ We make quality apparel that brands feel confident putting their label on. ”



WHY CHOOSE INDEPENDENT?

It's simple...We make quality apparel that brands feel confident putting their label on.

- Quality Products
- Large Inventory
- No Minimum Order Requirements
- Custom Apparel Manufacturing
- Ready To Ship Within 24hrs
- Warehouses on West & East Coast

At Independent Trading Company we strive to maintain a higher level of quality in all our products by paying special attention to details at every stage of production. We monitor materials and garment assembly processes all the way through to the finished product.

“Quality is in the details.”

The finishing touches we put into each design is what makes the difference! We don't need to make 100% cotton draw cords, double fleece lined hoods, or durable zippers, but we do and the result is a wide range of styles that are unique and dependable!



COMPANY

STOCK BLANK APPAREL	5
CUSTOM MANUFACTURING	7

COLLECTIONS

INDEPENDENT	9
AFX	35
EXPEDITION	45
STANDARD SUPPLY	75
PREMIUM	89
YOUTH	123


INFORMATION

STYLE INDEX	135
SWATCHES / PANTONES	137
LOCATIONS / CONTACT	141
DISTRIBUTORS	142

 @independenttradingcompany

 /IndependentTradingCompany

 Independent Trading Company

 @independenttradingco

STOCK BLANK APPAREL

A trusted supplier of quality blank apparel to thousands of top clothing brands.

Independent Trading Company keeps large reserves of blank sweatshirts, jackets, fleece bottoms, and more in stock so you can order what you need when you need it. Our customers' orders ship as soon as possible so they can be printed or embellished in a matter of days and placed at retail quickly. We are a trusted supplier to thousands of top clothing brands in the action sports and lifestyle apparel industry.

NO MINIMUMS ON STOCK ORDERS

Create your wholesale account and order online.
b2b.independenttradingco.com



STOCK BLANK COLLECTION CATEGORIES



Resort Wear Crops Pigment Dye Tie Dye Mineral Wash Flannel

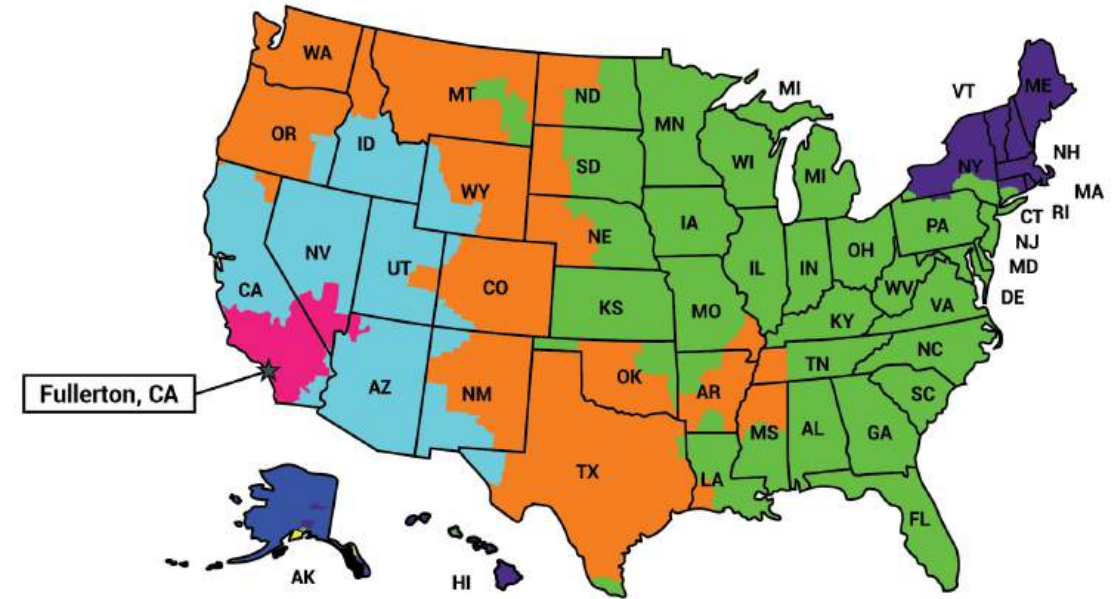


Puffy Workwear Softshell Windbreakers Activewear Vests



Youth Toddler Pants Shorts Blankets Bags

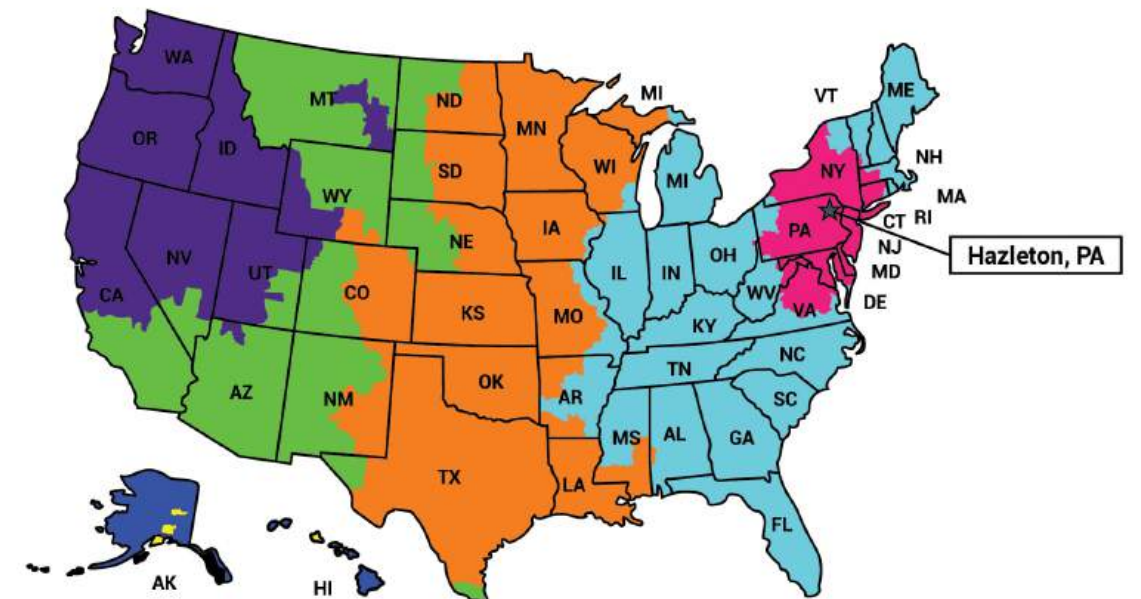
INDEPENDENT TRADING WEST COAST TRANSIT TIMES



If picked up on...	1 Day	2 Days	3 Days	4 Days	5 Days	6 Days	7+ Days
	Will be delivered by...						
Monday	Tue	Wed	Thu	Fri	Mon	Tue	Wed
Tuesday	Wed	Thu	Fri	Mon	Tue	Wed	Thu
Wednesday	Thu	Fri	Mon	Tue	Wed	Thu	Fri
Thursday	Fri	Mon	Tue	Wed	Thu	Fri	Mon
Friday	Mon	Tue	Wed	Thu	Fri	Mon	Tue
Saturday	Tue	Wed	Thu	Fri	Mon	Tue	Wed
Sunday	Tue	Wed	Thu	Fri	Mon	Tue	Wed

The Service Maps and charts are a general representations of transit. For more accurate transit quotes visit Shipping Rates and Delivery Times on fedex.com

INDEPENDENT TRADING EAST COAST TRANSIT TIMES



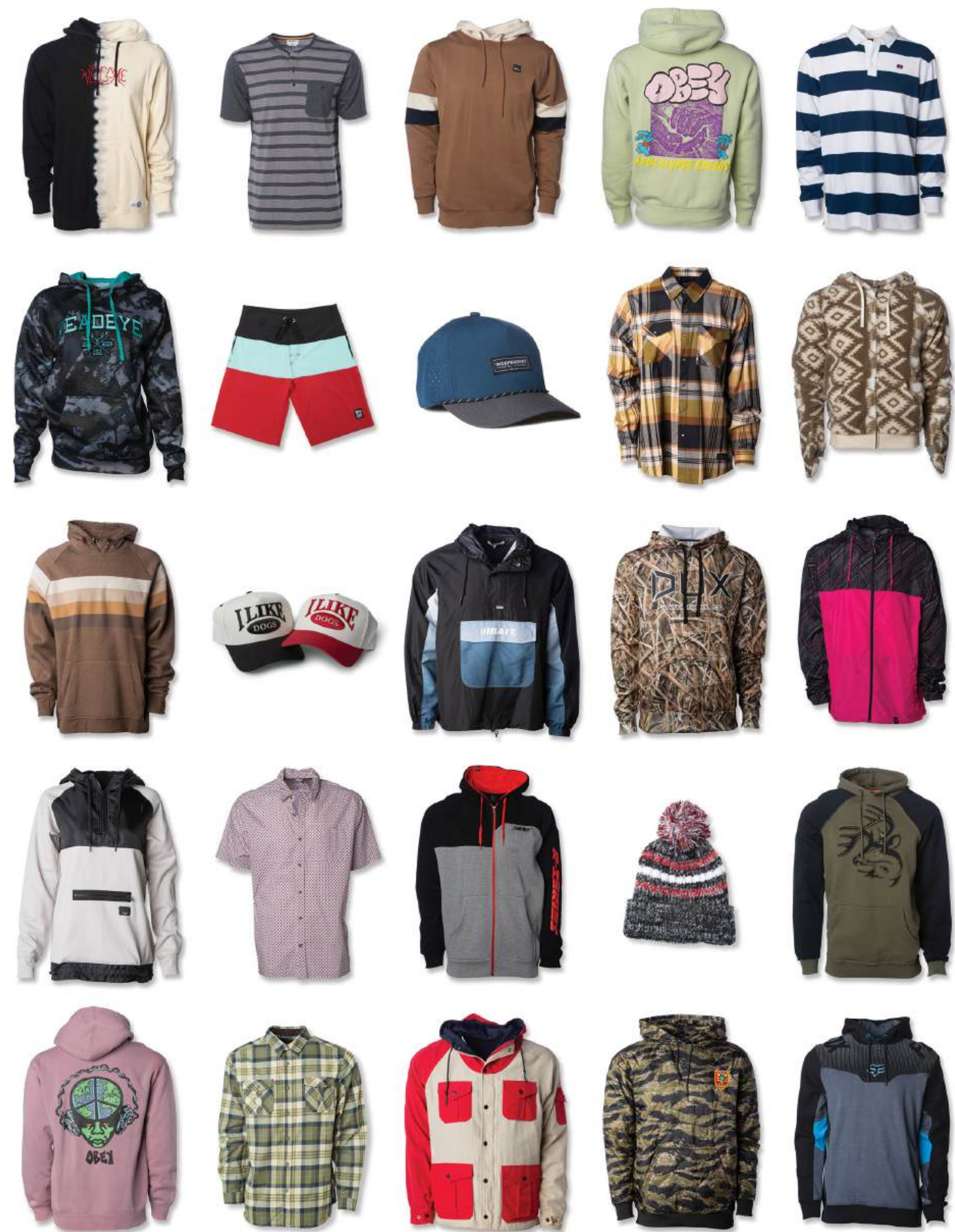


CUSTOM MANUFACTURING

Can't find it in our stock line? Let's make it custom.

We have the infrastructure and expertise to manufacture anything you design. We guarantee high quality and consistent manufacturing, on time delivery, and prices that can't be beat.

Independent Trading Company has manufactured custom apparel in China for more than 35 years. We have headquarters in San Clemente, California and Ningbo, China. Our Production Managers in California & China are experienced and can assist with every step of the production process, from product development to delivery. We guarantee high quality and consistent manufacturing, on time delivery, great customer service, and competitive prices. From sweatshirts & tees, to woven jackets & flannels, we have the infrastructure and expertise to manufacture anything you design.



- Design & Development
- Pattern Making
- Knitting
- Dyeing

- Cutting
- Embellishing
- Sewing
- Quality Control

- Packaging
- Import & Shipping
- Receiving
- Delivery

MINIMUM ORDER QUANTITY (MOQ) 600pcs Per Color & 1,200pcs Per Style

LEAD TIMES Typical lead times are 90-100 days to exit China after pre-production approval.

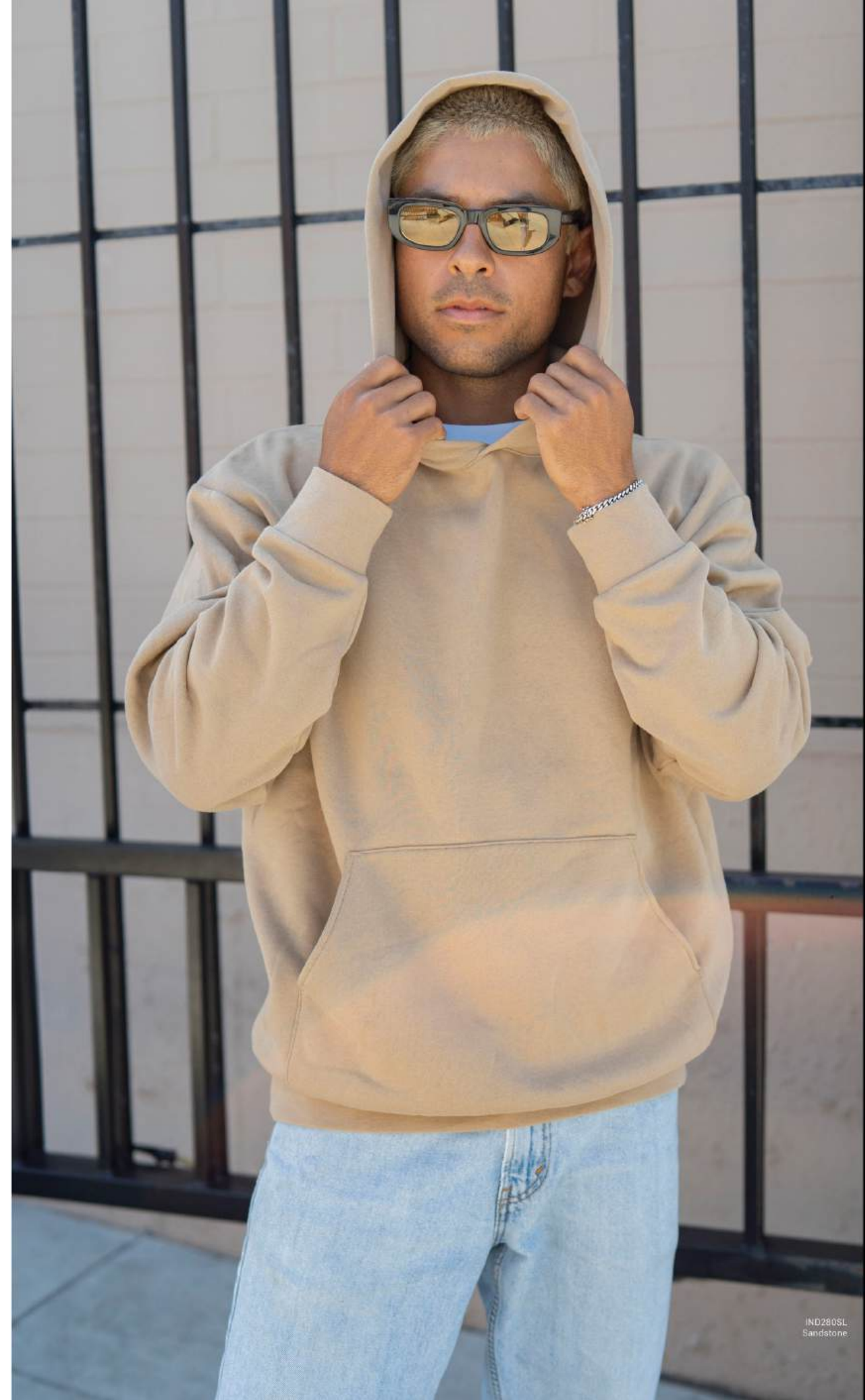
Contact us to request a meeting

info@independenttradingco.com • Toll Free: 877.366.9911 • Local: 949.366.9911

INDEPENDENT

COLLECTION

The benchmark in style, quality & fit.



IND280SL
Sandstone

HEAVYWEIGHT

IND45UVZ
IND330BLV *NEW*
IND330PANT *NEW*
IND420XD
IND3000
IND4000
IND4000Z
IND5000C
IND5000P
INDDUFBAG
INDLUXCREW *NEW*
INDLUXHOOD *NEW*

MIDWEIGHT

IND20PNT
IND20SRT
IND280SL

LIGHTWEIGHT

IND40RP

JERSEY

IND50TEE *NEW*



IND5000P

Premium 450gm Heavyweight Cross-Grain Hoodie

XS-3XL | Men's Standard Fit | Heavyweight | 450 gm (13.5 oz)

- 3-End Fleece
- Ring Spun Cotton
- 100% Cotton 21 Singles Face Yarns (Solid Colors)
- Double Fleece Lined Hood
- Antique Silver Eyelets
- 100% Cotton Shoestring Drawcord
- Antique Silver Drawcord Tips
- Double Ribbing Side Panels
- Reverse Coverstitch Sewing
- Cross-Grain Body & Hood Panels
- 520gm 100% Cotton 1x1 Ribbing
- Tear Away Woven Neck Label



Body & Hood Panels Sewn Cross-Grain



Legend
450gm HEAVYWEIGHT



Color: Dusty Pink

IND5000C

Premium 450gm Heavyweight Cross-Grain Crew

XS-3XL | Men's Standard Fit | Heavyweight | 450 gm (13.5 oz)

- 3-End Fleece
- 100% Cotton 21 Singles Face Yarns (Solid Colors)
- Ring Spun Cotton
- Double Ribbing Side Panels
- Reverse Coverstitch Sewing
- Cross-Grain Body & Hood Panels
- 520gm 100% Cotton 1x1 Ribbing
- Tear Away Woven Neck Label



Black Charcoal Heather Grey Heather White Classic Navy Maroon Alpine Green



Olive Dusty Pink Bone Red Royal Gold



Body & Hood Panels Sewn Cross-Grain



Color: Grey Heather



NEW **INDLUXHOOD**

LUX Heavyweight Modal Hood

XS-3XL | Men's Generous Fit | Heavyweight | 320 gm (9.5 oz)

- Cotton/Modal/Spandex Blend Fleece
- Double Layer 1 Piece Hood
- No Drawcords
- Blind stitch sewing on all seams
- Tear Away Neck Label
- Drop Shoulder
- Generous Boxy Fit
- 320gm Fleece + 400gm 1x1 Ribbing

57% Cotton / 38% Modal / 5% Spandex



Black



Ivory

LUX Heavyweight Modal Crew

XS-3XL | Men's Generous Fit | Heavyweight | 320 gm (9.5 oz)

INDLUXCREW **NEW**

- Cotton/Modal/Spandex Blend Fleece
- Generous Fit
- Tear Away Neck Label
- 320gm Fleece + 400gm 1x1 Ribbing

57% Cotton / 38% Modal / 5% Spandex



Black



Ivory

IND4000

Heavyweight Pullover Hood

XS-3XL (4XL & 5XL available in select colors) | Men's Generous Fit | Heavyweight | 330 gm (10 oz)

- Cotton/Polyester Blend Fleece
- Split Stitch Double Needle Sewing
- 1x1 Ribbing
- Tear Away Neck Label
- Fleece Lined Hood
- Twill Neck Tape
- Nickel Eyelets

Solid Colors: 70% Cotton/30% Polyester with 100% Cotton 32 Singles Face Yarn
Heather Colors: 52% Cotton/48% Polyester

Camo Colors: 75% Cotton/25% Polyester with 100% Cotton 32 Singles Face Yarn
Safety Colors: 52% Cotton/48% Polyester



All-Time Classic | The go-to blank hoodie for brands all over the world.





Color: Forest Camo



Color: Sandstone



Color: Cement

IND4000Z

Heavyweight Zip Hood

XS-3XL (4XL & 5XL available in select colors) | Men's Generous Fit | Heavyweight | 330 gm (10 oz)

- Cotton/Polyester Blend Fleece
- Fleece Lined Hood
- Split Stitch Double Needle Sewing
- Twill Neck Tape
- 1x1 Ribbing
- Nickel Eyelets
- #5 nickel kissing zipper
- Tear Away Neck Label

Solid Colors: 70% Cotton/30% Polyester with 100% Cotton 32 Singles Face Yarn
 Heather Colors: 52% Cotton/48% Polyester
 Camo Colors: 75% Cotton/25% Polyester with 100% Cotton 32 Singles Face Yarn



Heavyweight Crew Neck

XS-3XL | Men's Generous Fit | Heavyweight | 330 gm (10 oz)

IND3000

- Cotton/Polyester Blend Fleece
- Split Stitch Double Needle Sewing
- Twill Neck Tape
- 1x1 Ribbing at Cuffs & Waistband
- 1x1 Ribbing at Neck Rib
- Tear Away Neck Label

Solid Colors: 70% Cotton/30% Polyester with 100% Cotton 32 Singles Face Yarn
 Heather Colors: 52% Cotton/48% Polyester
 Camo Colors: 75% Cotton/25% Polyester with 100% Cotton 32 Singles Face Yarn





Color: Pigment Black



Color: Storm Blue

BLVD.



Color: Pigment Black

NEW IND330BLV | Boulevard 330gm Heavyweight Pullover Hood
XS-3XL | Generous Boxy Fit | Heavyweight | 330 gm (10 oz.)

- Cotton/Polyester Blend 3-End Fleece
- Double Layer 1 Piece Hood
- Drop Shoulder
- No Drawcords
- Generous Boxy Fit
- Blind stitch sewing on all seams
- Ring Spun Cotton
- 32 Singles face Yarn
- 1x1 Ribbing
- Tear Away Neck Label (Mill Dye)
- Sewn Woven Label (Pigment Dye)
- Twill Neck Tape

Solid Colors: 70% Cotton/30% Polyester with 100% Cotton 32 Singles Face Yarn
Heather Colors: 52% Cotton/48% Polyester



Black | Pigment Black | Storm Blue | Brown | Bone | Deadwood Tree Camo

NO DRAWCORD • GENEROUS BOXY FIT • DROP SHOULDER • SLEEK DESIGN



Combed Cotton

Combed Cotton provides an extremely soft hand feel.



NEW IND330PANT

10oz. Heavyweight Fleece Pant

XS-2XL | Men's Relaxed Fit | Heavyweight | 330 gm (10 oz.)

- 70% Cotton/30% Polyester
- Ring Spun Cotton
- Elastic Ankle Cuffs
- Sewn Eyelets
- No Outseam, for full leg screen printing
- 100% Cotton 32 Singles Face Yarn
- Elastic Waistband
- Interior Shoestring Drawcord
- Jersey Lined Welt Pockets
- Tear Away Waist Label

No Outseam

Allows for full leg screen printing.



Black

LUX Heavyweight Combed Cotton Tee

XS-2XL | Men's Standard Fit | Heavyweight | 210 GSM (6.2 oz.)

IND50TEE NEW

- 100% Ring Spun Combed Cotton
- Pre-Laundered Fabric
- Men's Standard Fit
- Tear Away Neck Label



Black

IND420XD

Mainstreet 420gm Heavyweight Pullover Hood

XS-3XL | Generous Boxy Fit | Heavyweight | 420 gm (12.5 oz)

- 3-End Fleece
- Cotton/Polyester Blend Fleece
- Specialty Yarns for Dry Hand Feel
- Pre-Laundered Fabric
- Drop Shoulder
- No Drawcord
- Double Layer 1-Piece Hood
- Blind Sewing on All Seams
- 500gm 1x1 ribbing
- Tear Away Neck Label (Mil Dye)
- Sewn Woven Label (Pigment Dye)

Solid Colors: 75% Cotton/25% Polyester with 100% Cotton 21 Singles Face Yarn
Heather Colors: 75% Cotton/25% Polyester



Black Pigment Black Grey Heather Blue Magic Brown Olive Ivory



Color: Ivory



Color: Blue Magic

Mainstreet

— 420 GRAM HOOD —



NO DRAWCORD • GENEROUS BOXY FIT • DROP SHOULDER • SLEEK DESIGN

XTRA-DRY
FLEECE

Specialty yarns for a durable dry hand feel.



Color: Grey Heather

IND280SL

Avenue 280gm Midweight Pullover Hood

XS-3XL | Generous Boxy Fit | Midweight | 280 gm (8.5 oz)

- Cotton/Polyester Blend 3-End Fleece
- No Drawcords
- Ring Spun Cotton
- Tear Away Neck Label (Mill Dye)
- Double Layer 1 Piece Hood
- Generous Boxy Fit
- 32 Singles face Yarn
- Sewn Woven Label (Pigment Dye)
- Drop Shoulder
- Blind stitch sewing on all seams
- 350gm 1x1 Ribbing
- Twill Neck Tape

Solid Colors: 80% Cotton/20% Polyester With 100% Cotton Face Yarns
Grey Heather: 52% Cotton/48% Polyester



- 280 Gram Hood -
Avenue



NO DRAWCORD • GENEROUS BOXY FIT • DROP SHOULDER • SLEEK DESIGN

SUPER-LOFT
FLEECE

1-Piece Hood • No Drawcord • Boxy Fit
Drop Shoulder • Simplified Construction



Color: Orchid

IND20PNT | Midweight Fleece Pant

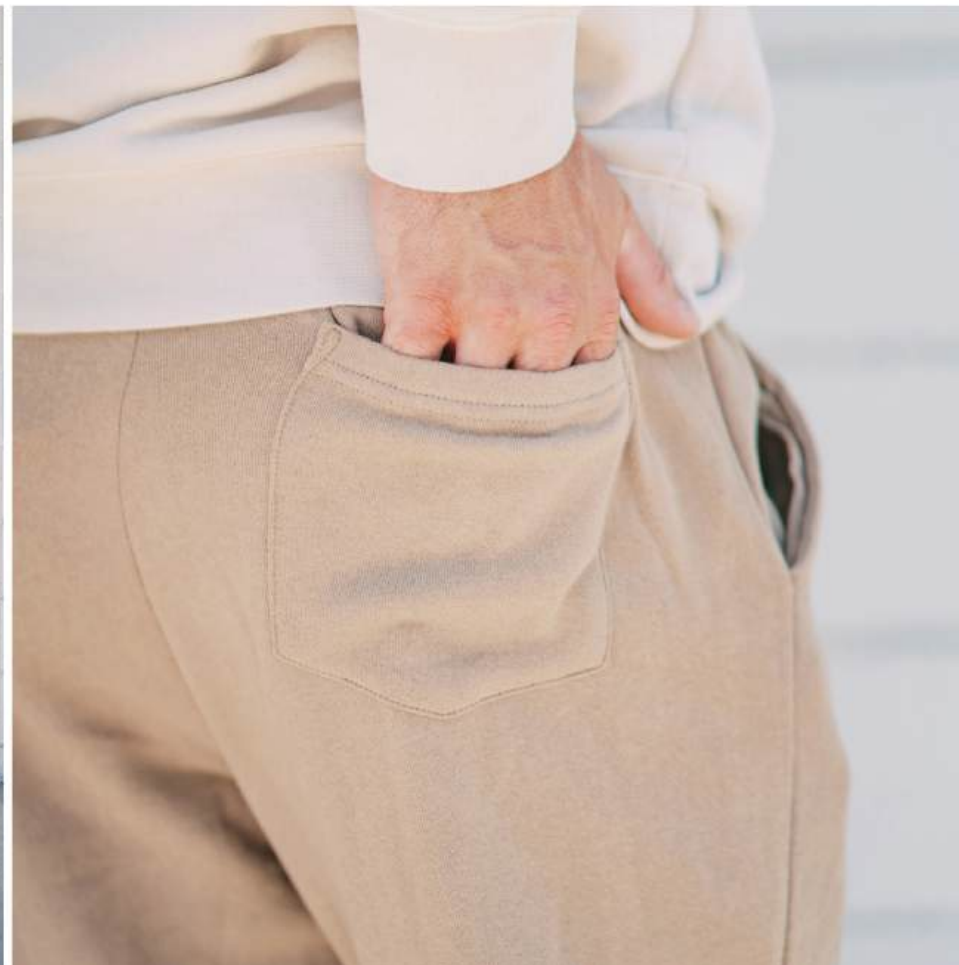
XS-2XL | Men's Relaxed Fit | Midweight | 280 gm (8.5 oz)

- Cotton/Polyester Blend Fleece
- Ring Spun Cotton
- Elastic Waistband
- Shoestring Drawcord
- 1x1 Ribbing at Ankle Cuffs
- Sewn Eyelets
- Sewn Fly Detail
- Back Pocket
- Jersey Lined Hand Pockets
- Tear Away Label

Solid Colors: 80% Cotton/20% Polyester With 100% Cotton Face Yarns
 Grey Heather: 52% Cotton/48% Polyester



Color: Sandstone



Color: Black Camo

Midweight Fleece Short | IND20SRT

XS-2XL | Men's Relaxed Fit | Midweight | 280 gm (8.5 oz)

- Cotton/Polyester Blend Fleece
- Ring Spun Cotton
- Elastic Waistband
- Shoestring Drawcord
- Tapered Knee Opening
- Sewn Eyelets
- Sewn Fly Detail
- Back Pocket
- Jersey Lined Hand Pockets
- Tear Away Label

Solid Colors: 80% Cotton/20% Polyester With 100% Cotton Face Yarns
 Grey Heather: 52% Cotton/48% Polyester



IND40RP | **Lightweight Raglan Pullover Hood**
XS-3XL | Men's Slim Fit | Lightweight | 230 gm (7 oz)

2-TONE

- Cotton/Polyester Blend Fleece
- Split Stitch Double Needle Sewing
- Nickel Eyelets
- Raglan Sleeves
- Jersey Lined Hood
- 1x1 Cuff Ribbing
- 1x1 Waistband Ribbing
- Twill Neck Tape

Screen Printers Please Note: This fabric is not made of 100% cotton face yarn.



Gunmetal Heather / Black



Gunmetal Heather / Charcoal Heather



Gunmetal Heather / Classic Navy Heather



Gunmetal Heather / Burgundy Heather



Gunmetal Heather / Army Heather



Charcoal Heather / Black



Charcoal Heather / Burgundy Heather



Charcoal Heather / Army Heather



Color: Charcoal Heather / Black



Color: Charcoal Heather / Burgundy Heather



Color: Gunmetal Heather / Classic Navy Heather



Color: Charcoal Heather / Black

2-TONE

Unisex Heavyweight Varsity Zip Hood | **IND45UVZ**
XS-3XL | Slim Fit | Heavyweight | 330 gm (10 oz)

- 30 Singles Face Yarn
- Cotton/Polyester Blend Fleece
- Fleece Lined Hood
- Split Stitch Double Needle Sewing
- Twill Neck Tape
- 1x1 Jacquard Ribbing
- Gunmetal Eyelets
- #5 Nylon Kissing Zipper



Charcoal Heather / Black



Black / Gunmetal Heather



INDDUFBAG

Day Tripper 29L Duffel Bag

20.5" x 10.5" | 29 Liters | 360 gm (10.5 oz)

- 100% Polyester
- Waterproof Interior PVC Coating
- Carrying Handles
- Removable Shoulder Strap



Black



Black / Checker Straps



Polka Dot



Cheetah



Black Cheetah



Southwest



Tiger Camo



Forest Camo



Black Camo



White Camo



Color: Tiger Camo



Color: Polka Dot



Color: Southwest

DAY
TRIPPER



Color: Forest Camo



COLLECTION

Lightweight & Ultra-Soft.



LIGHTWEIGHT
AFX24CRPC
AFX64CRP
AFX90UN
AFX90UNZ



AFX90UN
forest4.com

AFX90UN

Unisex Pullover Hood

XS-3XL | Slim Fit | Lightweight | 210 gm (6.5 oz)

- Cotton/Polyester Blend Fleece
- Supreme Printability & Softness
- Twill Neck Tape
- Nickel Eyelets
- Pre-Laundered
- Unlined Hood
- 1x1 Ribbing at Cuffs & Waistband
- White Round Drawcord w/ Plastic Tip
- 100% Cotton 40 Singles Face Yarn
- Split Stitch Double Needle Sewing
- 1x1 Ribbing at Pocket Openings



Classic Styling & Premium Fabric
The best printing fabric in our line
A screen printers best friend.



Color: Alpine Green
37



Color: Dusty Rose



Color: Forest Camo
38

AFX90UNZ

Unisex Zip Hood

XS-3XL | Slim Fit | Lightweight | 210 gm (6.5 oz)

- Cotton/Polyester Blend Fleece
- Pre-Laundered
- 100% Cotton 40 Singles Face Yarn
- Supreme Printability & Softness
- Unlined Hood
- Split Stitch Double Needle Sewing
- Twill Neck Tape
- 1x1 Ribbing at Cuffs & Waistband
- 1x1 Ribbing at Pocket Openings
- Nickel Eyelets
- #5 White Coil Kissing Zipper
- Nickel Zipper Car
- White Round Drawcord w/ Plastic Tip



Black



Charcoal Heather



Gunmetal Heather



Classic Navy



Slate Blue



Sandstone



Alpine Green



Dusty Rose
(XS-2XL)



Misty Blue
(XS-2XL)



Red
(XS-2XL)



Cobalt



Forest Camo



Black Camo

Classic Styling & Premium Fabric

The best printing fabric in our line.
A screen printers best friend.



Color: Forest Camo



Color: Sandstone



Color: Classic Navy

AFX24CRPC

Women's Crop Crew Neck

XS-2XL | Standard Fit | Lightweight | 210 gm (6.5 oz)

- Cotton/Polyester Blend Fleece
- Supreme Printability & Softness
- Twill Neck Tape
- Sewn Eyelets
- Pre-Laundered
- Unlined Hood
- 3/8" Flat Drawcord
- Twill Neck Tape
- 100% Cotton 40 Singles Face Yarn
- Split Stitch Double Needle Sewing
- 1x1 Ribbing at Cuffs
- Tear Away Neck Label



Black



Grey Heather



White



Bone



Blush



Sage



Black Camo



Tie Dye Cotton Candy



Color: Tie Dye Cotton Candy



Color: Blush

CROP CREW

Bold, Fashion-Forward
garment that's fun & stylish.



Color: Grey Heather

AFX64CRP

Women's Crop Hoodie
XS-2XL | Standard Fit | Lightweight | 210 gm (6.5 oz)

- Cotton/Polyester Blend Fleece
- Supreme Printability & Softness
- Twill Neck Tape
- Sewn Eyelets
- Pre-Laundered
- Unlined Hood
- 3/8" Flat Drawcord
- Twill Neck Tape
- 100% Cotton 40 Singles Face Yarn
- Split Stitch Double Needle Sewing
- 1x1 Ribbing at Cuffs
- Tear Away Neck Label



Black



Grey Heather



White



Bone



Blush



Sage



Tie Dye Cotton Candy



Black Camo

**CROP
HOODIE**

Bold, Fashion-Forward
garment that's fun & stylish.



Color: Black Camo



Color: Blush

Expedition



COLLECTION

Warm, Functional & Durable.



HEAVYWEIGHT

EXP35SSZ
EXP40SHZ
EXP50F
EXP80PTZ
EXP90SHZ
EXP94NAW
EXP95NB
EXP99CNB
EXP550Z
EXP560V

MIDWEIGHT

EXP10PANT *NEW*
EXP15WPQ *NEW*
EXP20PQ *NEW*
EXP25PH *NEW*
EXP30PZ *NEW*

LIGHTWEIGHT

EXP52BMR
EXP54LWP
EXP54LWZ
EXP60PAZ
EXP64CRP
EXP70PTZ
EXP100PFZ
EXP120PFV
EXP200PFZ
EXP220PFV



EXP54LWP
Smoke / Graphite



Lightweight 1/2 Zip Anorak Windbreaker Jacket

XS-3XL (XXS available in select colors) | Men's Standard Fit | Lightweight | 82 gm

EXP54LWP

- Water Resistant Polyester Fabric
- Rubber Zipper Pull Tab
- Three Panel Hood
- Front Pouch Pocket
- Locker Loop in Center Back Neck
- Matte Finish Eyelets & Zipper
- Reversed Zipper Tape
- Scuba Neck
- Bungee Toggle at Waistband
- Tear Away Neck Label
- #4 Zipper with Zipper Pull
- Fine Mesh Hood Liner
- Self Neck Tape
- Elastic Cuffs

Screen Printers Please Note: This garment is 100% Polyester, Poly inks are recommended, Please do your own testing.



Black



Smoke



Aqua
(XXS-3XL)



Blush
(XXS-3XL)



Army / Black Zip



Smoke / Graphite



Classic Navy / Red



Black Camo



Color: Black Camo



Color: Smoke / Graphite



Color: Army / Black Zip

EXP54LWZ

Lightweight Windbreaker Jacket

XS-3XL (XXS available in select colors) | Men's Standard Fit | Lightweight | 82 gm

- Water Resistant Polyester Fabric
- Rubber Zipper Pull Tab
- Three Panel Hood
- Welt Pockets w/ Mesh Pocket Bags
- Locker Loop in Center Back Neck
- Matte Finish Eyelets & Zipper
- Reversed Zipper Tape
- Scuba Neck
- Bungee Toggle at Waistband
- Tear Away Neck Label
- #4 Zipper with Zipper Pull
- Fine Mesh Hood Liner
- Self Neck Tape
- Elastic Cuffs

Screen Printers Please Note: This garment is 100% Polyester. Poly inks are recommended. Please do your own testing.



Color: Aqua / White Zip



Color: Classic Navy / Royal



Color: Black / Graphite

CRP
WINDBREAKER



Bold, Fashion-Forward
garment that's fun & stylish.

Wear it in, pack it out.
Packable Pocket

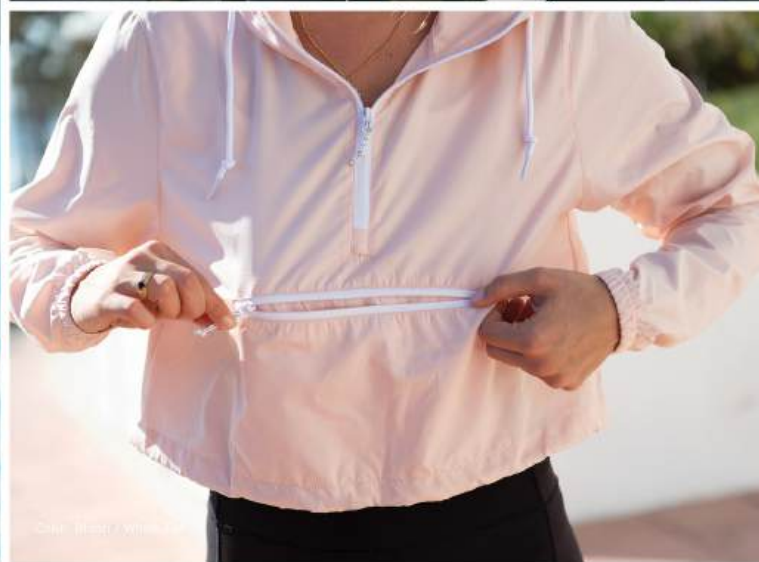
Color: Black Camo



Color: White Camo



Color: Black / White Stripe



Color: Blush / White Zip



Color: Army



Color: Black

EXP64CRP | **Women's Lightweight Crop Windbreaker**
XS-2XL | Standard Fit | Lightweight | 82 gm

- Water Resistant Polyester Fabric
- Matte Finish Eyelets & Zippers
- #4 Zipper with Zipper Pull
- Zipper Pull String
- Reversed Zipper Tape
- Fine Mesh Hood Liner
- Three Panel Hood
- Scuba Neck
- Self Neck Tape
- Bungee Toggle at Waistband
- Elastic Cuffs
- Locker Loop in Center Back Neck
- Tear Away Neck Label

Screen Printers Please Note: This garment is 100% Polyester. Poly inks are recommended. Please do your own testing.



Black



Blush / White Zip



White Camo



Black Camo

Lightweight Bomber Jacket | **EXP52BMR**
XS-3XL | Men's Standard Fit | Lightweight | 82 gm

- Water Resistant Polyester Fabric
- 100% Polyester 1x1 Ribbing
- Waterproof Pressure Resistant Fabric
- #5 Vislon Zipper
- Welt Pockets
- Locker Loop in Center Back Neck
- Self Neck Tape
- Tear Away Neck Label

Screen Printers Please Note: This garment is 100% Polyester. Poly inks are recommended. Please do your own testing.



Black



Army



Black / White Stripe

EXP50F | Flannel Shirt
XS-3XL | Men's Standard Fit | 200 gm

- Cotton/Polyester Blend Flannel
- Button Closure
- Double Front Pockets
- Top Flap Pocket Opening
- Rollup Sleeve Vents
- Tear Away Neck Label



Charcoal Heather / Black



Grey Heather / Black



Red / Black



Olive / Black



Color: Charcoal Heather / Black



Color: Red / Black



Simple Ways to Customize:

- Embroidery
- Sewn Patch
- Screen Print
- Woven Label



Color: Grey Heather / Black





Color: Black



Color: Black



Color: Saddle



EXP550Z Insulated Canvas Workwear Jacket

XS-3XL | Men's Generous Fit | 100% Cotton Canvas | 360 gm

- Cotton Canvas Shell
- 60gm Hyper-Loft Poly Fill Insulation
- 100% Polyester Lining
- Heavy Duty Antique Brass Zipper
- Antique Brass Eyelets
- 3 Panel Hood
- Articulated Elbows
- 100% Cotton Drawcord
- Interior Back Neck Locker Patch

100% COTTON CANVAS

- 2x2 Cuff Ribbing
- 2x2 Waistband Ribbing
- Triple Needle Stitching
- #3 Hidden Embroidery Access Zipper
- Tear Away Neck Label

100% COTTON CANVAS

- Cotton Canvas Shell
- 60gm Hyper-Loft Poly Fill Insulation
- 100% Polyester Lining
- Heavy Duty Antique Brass Snaps
- Interior Back Neck Locker Patch
- 2x2 Collar Ribbing
- #3 Hidden Embroidery Access Zipper
- Tear Away Neck Label

Insulated Canvas Workwear Vest | EXP560V

XS-3XL | Men's Standard Fit | 100% Cotton Canvas | 360 gm

HYPER-LOFT
INSULATION

Concealed
Embroidery
Access

Our Workwear Jacket & Vest have a full width hidden zipper for screenprint & embroidery access to easily print multi-color logos & hide embroidery backing on the inside of the garment.



Black



Saddle



Black



Saddle

Concealed
Embroidery
Access

Our Workwear Jacket & Vest have a full width hidden zipper for screenprint & embroidery access to easily print multi-color logos & hide embroidery backing on the inside of the garment.

HYPER-LOFT
INSULATION

EXP100PFZ

Men's Hyper-Loft Puffy Jacket

XS-3XL | Standard Fit | 100% Nylon Shell

- 100% Nylon Exterior Shell
- 60gm Hyper-Loft Poly Fill Insulation
- 100% Polyester Lining
- #5 Reverse Coil Zippers
- Packable Pocket
- Capped Elastic Sleeve Cuff
- Locker Loop
- Plastic Cinche Toggle
- Concealed Embroidery Access
- Tear Away Neck Label



Black



Packable Chest Pocket

HYPER-LOFT
INSULATION



EXP200PFZ

Women's Hyper-Loft Puffy Jacket

XS-2XL | Standard Fit | 100% Nylon Shell

- 100% Nylon Exterior Shell
- 60gm Hyper-Loft Poly Fill Insulation
- 100% Polyester Lining
- #5 Reverse Coil Zippers
- Packable Pocket
- Capped Elastic Sleeve Cuff
- Locker Loop
- Plastic Cinche Toggle
- Concealed Embroidery Access
- Tear Away Neck Label



Black



Packable Chest Pocket

HYPER-LOFT
INSULATION



EXP120PFV

Men's Hyper-Loft Puffy Vest

XS-3XL | Standard Fit | 100% Nylon Shell

- 100% Nylon Exterior Shell
- 60gm Hyper-Loft Poly Fill Insulation
- 100% Polyester Lining
- #5 Reverse Coil Zippers
- Packable Pocket
- Capped Elastic Arm Opening
- Locker Loop
- Plastic Cinche Toggle
- Concealed Embroidery Access
- Tear Away Neck Label



Black



Packable Chest Pocket

HYPER-LOFT
INSULATION



EXP220PFV

Women's Hyper-Loft Puffy Vest

XS-2XL | Standard Fit | 100% Nylon Shell

- 100% Nylon Exterior Shell
- 60gm Hyper-Loft Poly Fill Insulation
- 100% Polyester Lining
- #5 Reverse Coil Zippers
- Packable Pocket
- Capped Elastic Arm Opening
- Locker Loop
- Plastic Cinche Toggle
- Concealed Embroidery Access
- Tear Away Neck Label



Black



Packable Chest Pocket

HYPER-LOFT
INSULATION





Color: Forest Camo



Color: Classic Khaki



Color: Classic Khaki



Color: Classic Navy



Color: Black/Black



Color: Black/Black

EXP95NB | Heavyweight Windbreaker Hooded Jacket

XS-3XL | Men's Standard Fit | 100% Nylon | Heavyweight | 150 gm 320D

- 100% Nylon Shell
- Waterproof Coating: 10,000 MM
- PU Coating Breathability: 5,000 G/M²
- Unlined Hood
- Self Neck Tape
- Antique Brass Snaps (Select Colors)
- Antique Brass Eyelets (Select Colors)
- Matte Black Snaps (Black/Black)
- Matte Black Eyelets (Black/Black)
- Elastic Cuffs
- Underarm Grommets
- Drawcord Closure at Hood
- Drawcord Closure at Bottom Hem
- Tear Away Neck Label



Black/Black



Black



Classic Navy



Classic Khaki



Forest Camo

Heavyweight Windbreaker Coaches Jacket

XS-3XL | Men's Standard Fit | 100% Nylon | Heavyweight | 150 gm 320D

- 100% Nylon Shell
- Waterproof Coating: 10,000 MM
- PU Coating Breathability: 5,000 G/M²
- Self Neck Tape
- Antique Brass Snaps (Select Colors)
- Antique Brass Eyelets (Select Colors)
- Matte Black Snaps (Black/Black)
- Matte Black Eyelets (Black/Black)
- Elastic Cuffs
- Underarm Grommets
- Drawcord Closure at Bottom Hem
- Tear Away Neck Label



Black/Black



Black



Classic Navy



Classic Khaki



Forest Camo

EXP99CNB

EXP94NAW

Heavyweight Water-Resistant Windbreaker Anorak Jacket

XS-3XL | Men's Standard Fit | 100% Nylon | Heavyweight | 150 gm 320D

- 100% Nylon Shell
- Waterproof Coating: 10,000 MM
- PU Coating Breathability: 5,000 G/M²
- Neck Taping
- #5 Reverse Coil Zippers
- Metal Zipper Pull
- Rubber Zipper Pull Tab
- Zipper Garage
- Fine Mesh Hood Liner
- Metal Eyelets
- 3 Panel Hood
- Scuba Neck
- Round Poly Drawcord
- Hidden Snaps at Front Pocket
- Side Slit Pockets
- Tightening Toggle at Waistband
- Elastic Cuffs
- Tear Away Neck Label



Black



Graphite



Classic Navy



Forest Camo



Black Camo



Color: Classic Navy



Comfort & Warmth
Concealed embroidery access for embellishing.

Color: Graphite



EXP35SSZ

Poly-Tech Soft Shell Jacket

XS-3XL | Men's Generous Fit | Heavyweight | 460 gm (13.8 oz) total weight

- 300gm 100% Waterproof Poly Shell
- Bonded 160gm Micro Fleece Lining
- Waterproof Coating: 20,000 MM
- Neck Taping
- #5 Reverse Coil Water Resistant Zippers
- Metal Zipper Pull
- Zipper Pull Tab
- Left Zipper Chest Pocket
- Zipper Welt pockets
- Zipper Garage
- 3 Panel Hood
- Scuba Neck
- Cinch Toggle at Hood & Waistband
- Antique Nickel Eyelets
- Media Pocket
- Tear Away Neck Label

Screen Printers Please Note: Low cure poly ink & poly blocker recommended. Keep garment temperature under 300°.



Black



Graphite

Heavyweight Poly-Tech Zip Hood

XS-2XL | Men's Standard Fit | Heavyweight | 330gm (10 oz)

EXP80PTZ

- Cotton/Polyester Water-Resistant
- 100% Polyester Pique Panels
- 100% Anti-Pill Polyester Face
- Zip-Off Removable Hood
- 3 Panel Hood
- Interior Cadet Collar
- 1x1 Ribbing at Cuffs
- 1x1 Ribbing at Waistband
- Antique Nickel Eyelets
- #5 Coil Exposed Zipper
- Flat Drawcord
- Antique Nickel Drawcord Tip
- Thumbholes At Cuffs
- Front Welt Pockets
- Media Pocket



Black



Color: Black



Color: Black

Women's Lightweight Poly-Tech Zip

XS-3XL | Slim Fit | Lightweight | 190gm (6.5 oz)

EXP60PAZ

- 100% Polyester Fleece
- #5 Exposed Coil Zipper

- Antique Nickel Zipper Pull
- DTM Zipper Pull Tab

- Zipper Garage
- Hidden Stash Pocket

- Thumbholes at Cuffs
- Tear Away Neck Label



Black



Gunmetal Heather



White



Aster Blue



Coral

EXP70PTZ Unisex Poly-Tech Zip Track Jacket

XS-2XL | Standard Fit | Lightweight | 220 gm (6.5 oz)

- 100% Polyester Fleece

- 2 White Stripes on Raglan Sleeves
(No stripes on color Black/Black)

- 1x1 Ribbing at Cuffs

- 1x1 Ribbing at Waistband

- #5 Coil Kissing Zipper

- Nickel Zipper Pull

- Twill Neck Tape

- Media Pocket

Please Note: Colorway Black/Black has no stripes.



Black/Black



Black



Classic Navy



Gunmetal Heather



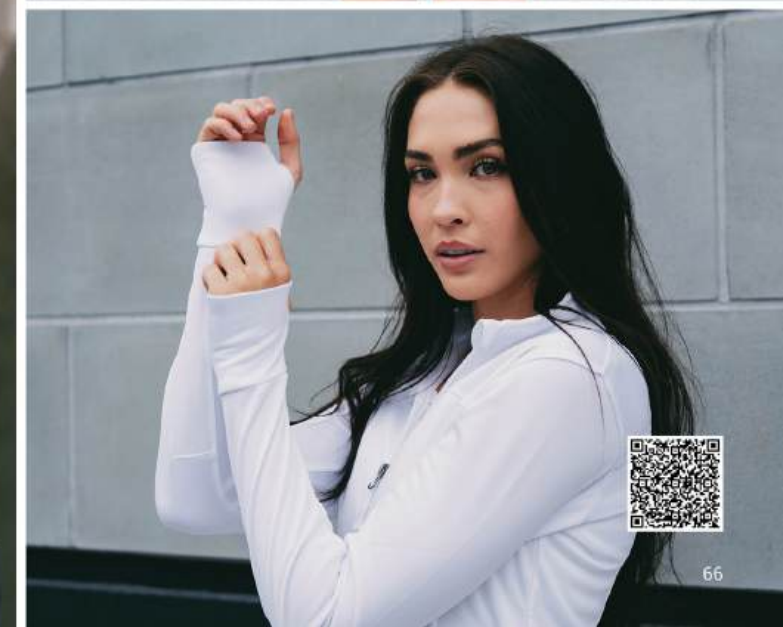
Brick Red



Color: Black

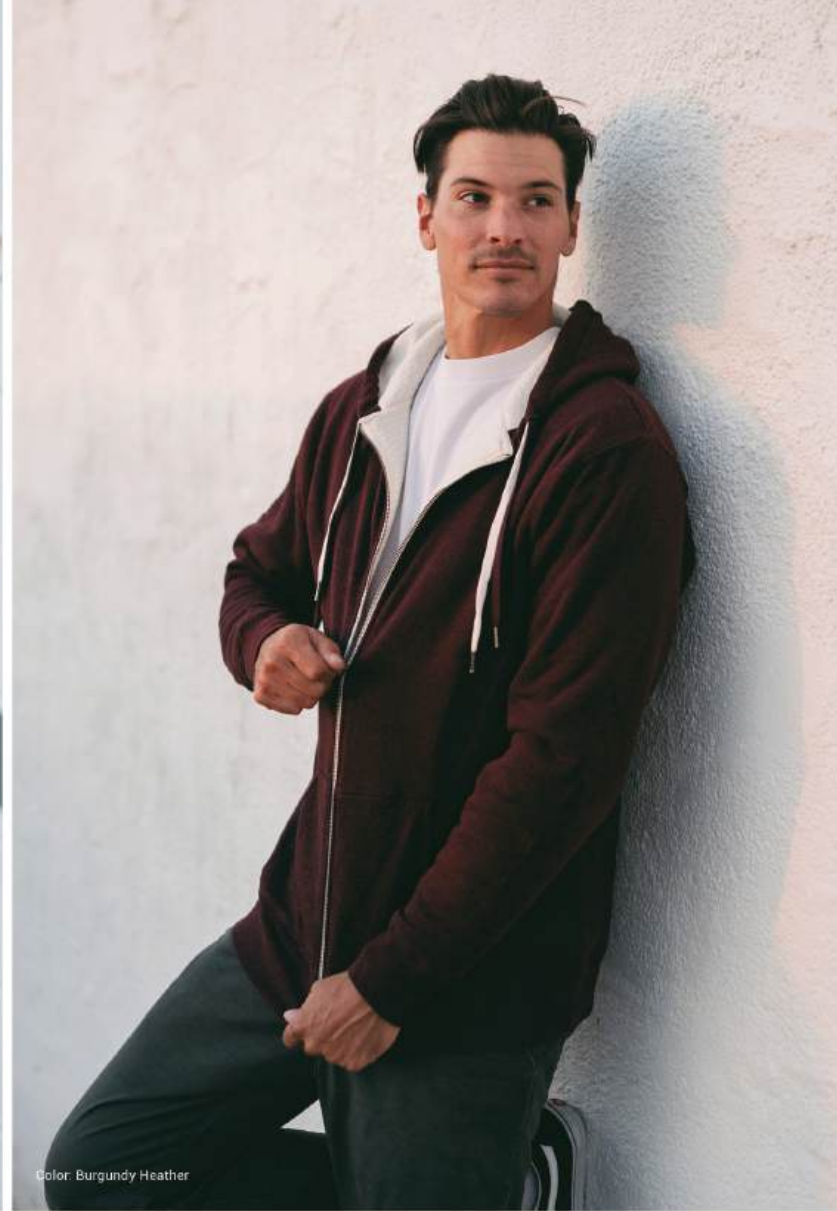


Color: White





Color: Salt & Pepper



Color: Burgundy Heather



EXP40SHZ

Heavyweight Sherpa Lined Zip Hood
S-4XL | Men's Generous Fit | Heavyweight | 280gm (8.5 oz)

- 14 oz. Total Weight
- Cotton/Polyester Blend Fleece
- 100% Polyester Sherpa Lining (15.5 oz.)
- 100% Cotton 32 Singles Face Yarn
- Split Stitch Double Needle Sewing
- Twill Neck Tape
- 1x1 Ribbing at Cuffs
- 1x1 Ribbing at Waistband
- Antique Nickel Eyelets
- #5 Antique Nickel Exposed Zipper



Black / Natural

EXP90SHZ | Unisex Heavyweight Sherpa Lined Zip Hood

XS-2XL | Slim Fit | Heavyweight | 250 gm (7.5 oz)

- 12.3 oz. Total Weight
- Cotton/Polyester Blend French Terry
- 100% Polyester Sherpa Lining
- 32 Singles Face Yarn
- Split Stitch Double Needle Sewing
- 1x1 Ribbing at Cuffs
- 1x1 Ribbing at Waistband
- Antique Nickel Eyelets
- Flat Drawcord
- Antique Nickel Drawcord Tips
- Double Drawcords
- #5 Antique Nickel Exposed Zipper
- Media Pocket Inside Front Pocket
- Thumbholes at Cuffs
- Twill Neck Tape



Black Charcoal Heather Salt & Pepper Burgundy Heather Navy Heather Sky Heather



Introducing:

PERFORM

Activewear Collection

Pant · 1/4 Zip · Pullover · Full Zip



4-WAY STRETCH



MOISTURE WICKING



BREATHABLE

PERFORM
fleece pant



Perform Fleece Pant

XS-2XL | Men's Standard Fit | Midweight | 280gm (8.5 oz.)

EXP10PANT

NEW

- Cotton/Polyester/Spandex Blend
- 100% Ring Spun Cotton Face Yarn
- Secondary Right Hand Zipper Pocket
- Tear Away Waist Label
- 4-Way Stretch French Terry
- Flat Drawcord w/ Silicone Tip
- Pre-Laundered Fabric



4-WAY STRETCH



MOISTURE WICKING



BREATHABLE



Black



Classic Navy



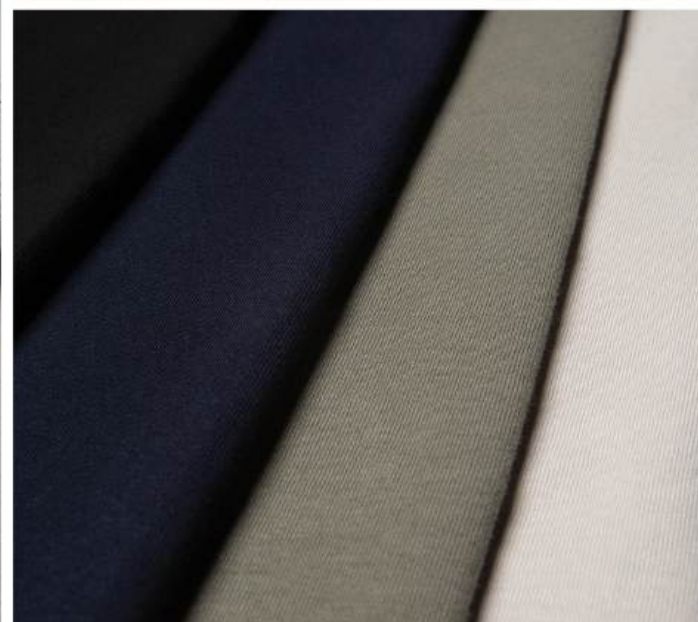
Pine



Smoke



Color: Smoke



Color: Pine



Color: Smoke



Color: Black

NEW EXP15WPQ

Women's Perform Quarter Zip
XS-2XL | Standard Fit | Midweight | 280gm (8.5 oz.)

- Cotton/Polyester/Spandex Blend
- 100% Ring Spun Cotton Face Yarn
- Reverse Coil Zipper
- Drop Shoulder
- 4-Way Stretch French Terry
- Pre-Laundered Fabric
- Hip Height Body Length
- Tear Away Neck Label



Black

Classic Navy

Pine

Smoke



Perform Quarter Zip
XS-3XL | Men's Standard Fit | Midweight | 280gm (8.5 oz.)

EXP20PQ **NEW**

- Cotton/Polyester/Spandex Blend
- 100% Ring Spun Cotton Face Yarn
- Reverse Coil Zipper
- 4-Way Stretch French Terry
- Pre-Laundered Fabric
- Tear Away Neck Label

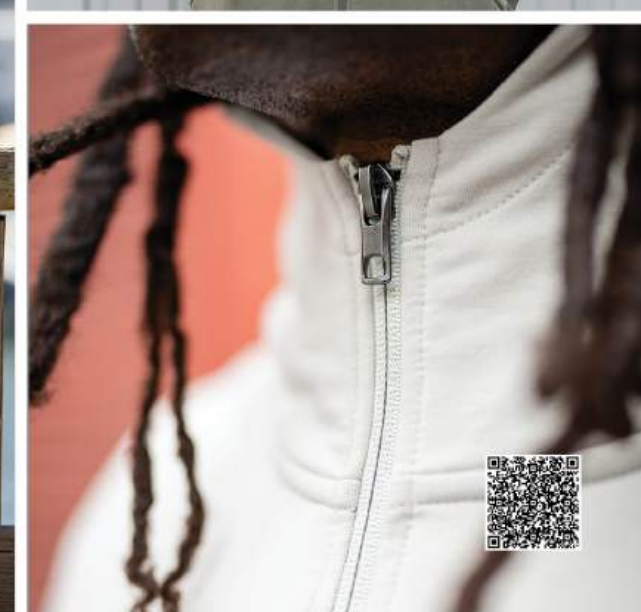


Black

Classic Navy

Pine

Smoke



NEW

EXP25PH

Perform Pullover Hood

XS-3XL | Men's Standard Fit | Midweight | 280gm (8.5 oz.)

- Cotton/Polyester/Spandex Blend
- 100% Ring Spun Cotton Face Yarn
- Side Seam Welt Pockets
- Flat Drawcord w/ Silicone Tip
- 4-Way Stretch French Terry
- Pre-Laundered Fabric
- 3 Panel Hood
- Tear Away Neck Label



Black



Classic Navy



Pine



Smoke



BREATHABLE



BREATHABLE



Black



Classic Navy



Pine



Smoke

Perform Zip Hood

XS-3XL | Men's Standard Fit | Midweight | 280gm (8.5 oz.)

- Cotton/Polyester/Spandex Blend
- 100% Ring Spun Cotton Face Yarn
- Reverse Coil Zipper
- Side Seam Welt Pockets
- 4-Way Stretch French Terry
- Pre-Laundered Fabric
- 3 Panel Hood
- Scuba Neck
- Tear Away Neck Label

EXP30PZ

NEW

STANDARD
S U P P L Y

COLLECTION

The standard in style, quality & fit.



MIDWEIGHT

- SS3000
- SS4500
- SS4500Z
- SS4600QZ *NEW*

LIGHTWEIGHT

- SS1000
- SS1000C
- SS1000Z

JERSEY

- SS150J



SS4600QZ
Classic Navy

NEW SS4600QZ

Midweight Quarter Zip

XS-3XL | Men's Standard Fit | Midweight | 280 gm (8.5 oz)

- Cotton/Polyester Blend 3-End Fleece
- 32 Singles Face Yarn
- Twill Neck Tape
- #5 Metal Exposed Zipper
- Ring Spun Cotton
- Split Stitch Double Needle Sewing
- 1x1 Ribbing at Cuffs & Waistband
- Tear Away Neck Label

Solid Colors: 80% Cotton/20% Polyester with 32 Singles 100% Cotton Face Yarns
Grey Heather: 75% Cotton/25% Polyester 32 Singles Face Yarn



Black



Asphalt



Grey Heather



Classic Navy



Alpine Green



Brown



Cement



Bone

1/4 Zip



Color: Brown



Color: Classic Navy



Color: Alpine Green

SS4500

Midweight Pullover Hood

XS-3XL (4XL & 5XL available in select colors) | Men's Standard Fit | Midweight | 280 gm (8.5 oz)

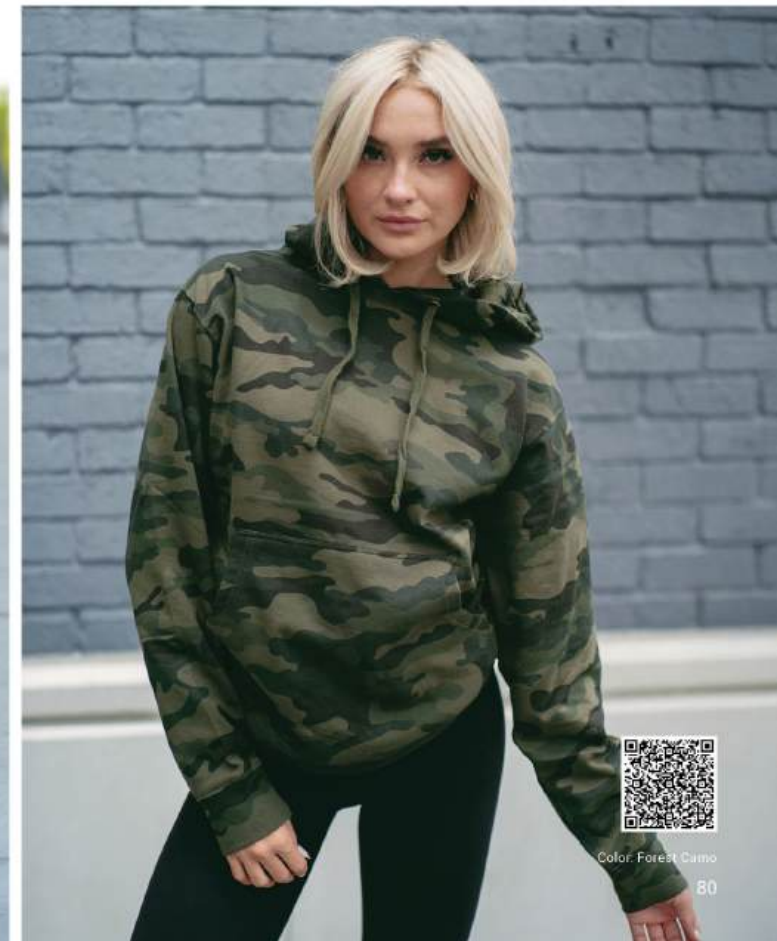
- Cotton/Polyester Blend 3-End Fleece
- 32 Singles Face Yarn
- Split Stitch Double Needle Sewing
- 1x1 Ribbing at Cuffs
- Metal Eyelets
- Ring Spun Cotton
- Jersey Lined Hood
- Twill Neck Tape
- 1x1 Ribbing at Waistband
- Tear Away Neck Label

Solid Colors: 80% Cotton/20% Polyester with 100% Cotton 32 Singles Face Yarn
Gunmetal Heather: 80% Cotton/20% Polyester with 100% Cotton 32 Singles Face Yarn

Grey Heather: 75% Cotton/25% Polyester with 32 Singles Face Yarn
All Other Heather Colors: 55% Cotton/45% Polyester with 32 Singles Face Yarn



Best Value Midweight Hoodie | Deep inventory & extensive color choices.





Color: Alpine Green



Color: Grey Heather



Color: Army Heather

SS4500Z Midweight Zip Hood

XS-3XL | Men's Standard Fit | Midweight | 280 gm (8.5 oz)

- Cotton/Polyester Blend 3-End Fleece
- 32 Singles Face Yarn
- Split Stitch Double Needle Sewing
- 1x1 Ribbing at Cuffs & Waistband
- Metal Eyelets
- Ring Spun Cotton
- Jersey Lined Hood
- Twill Neck Tape
- #5 Metal Kissing Zipper
- Tear Away Neck Label

Solid Colors: 80% Cotton/20% Polyester with 100% Cotton 32 Singles Face Yarn
Gunmetal Heather: 80% Cotton/20% Polyester with 100% Cotton 32 Singles Face Yarn

Grey Heather: 75% Cotton/25% Polyester with 32 Singles Face Yarn
All Other Heather Colors: 55% Cotton/45% Polyester with 32 Singles Face Yarn



Midweight Crew Neck SS3000

XS-3XL (4XL & 5XL available in select colors) | Men's Standard Fit | Midweight | 280 gm (8.5 oz)

- Cotton/Polyester Blend 3-End Fleece
- 32 Singles Face Yarn
- 1x1 Ribbing at Collar
- Twill Neck Tape
- Ring Spun Cotton
- Split Stitch Double Needle Sewing
- 1x1 Ribbing at Cuffs & Waistband
- Tear Away Neck Label

Solid Colors: 80% Cotton/20% Polyester with 100% Cotton 32 Singles Face Yarn
Gunmetal Heather: Solid Colors: 80% Cotton/20% Polyester with 100% Cotton 32 Singles Face Yarn

Grey Heather: 75% Cotton/25% Polyester with 32 Singles Face Yarn
All Other Heather Colors: 55% Cotton/45% Polyester with 32 Singles Face Yarn



SS1000

Unisex Lightweight Loopback Terry Pullover Hood

XS-3XL | Slim Fit | Lightweight | 250 gm (7.5 oz)

- Cotton/Polyester Blend 3-End Fleece
- Loopback Terry Fabric
- Antique Silver Eyelets
- Twill Neck Tape
- Ring Spun Cotton
- 1x1 Ribbing at Cuffs
- Double Shoelace Drawcords
- Tear Away Neck Label
- 32 Singles Face Yarn
- 1x1 Ribbing at Waistband
- Antique Silver Drawcord Tips

Please Note: Colors White & Bone come with a single dtm drawcord.



Double Drawcords!
Ditch the one you don't like,
or rock both.



Color: Harvest Gold
83



Color: Misty Blue
84



Double Drawcords!
Ditch the one you don't like,
or rock both.



Color: Olive



Color: Indigo



Loopback Terry
Unique fabric, modern colors,
and everyday comfort.

Color: Olive



Color: Indigo

SS1000Z | Unisex Lightweight Loopback Terry Zip Hood
XS-3XL | Slim Fit | Lightweight | 250 gm (7.5 oz)

- Cotton/Polyester Blend 3-End Fleece
- Ring Spun Cotton
- 32 Singles Face Yarn
- Loopback Terry Fabric
- 1x1 Ribbing at Cuffs & Waistband
- Double Shoelace Drawcords
- Antique Silver Zipper & Zipper Pull
- Antique Silver Eyelets
- Antique Silver Drawcord Tips
- Twill Neck Tape
- Tear Away Neck Label

Please Note: Colors White & Bone come with a single dtm drawcord.

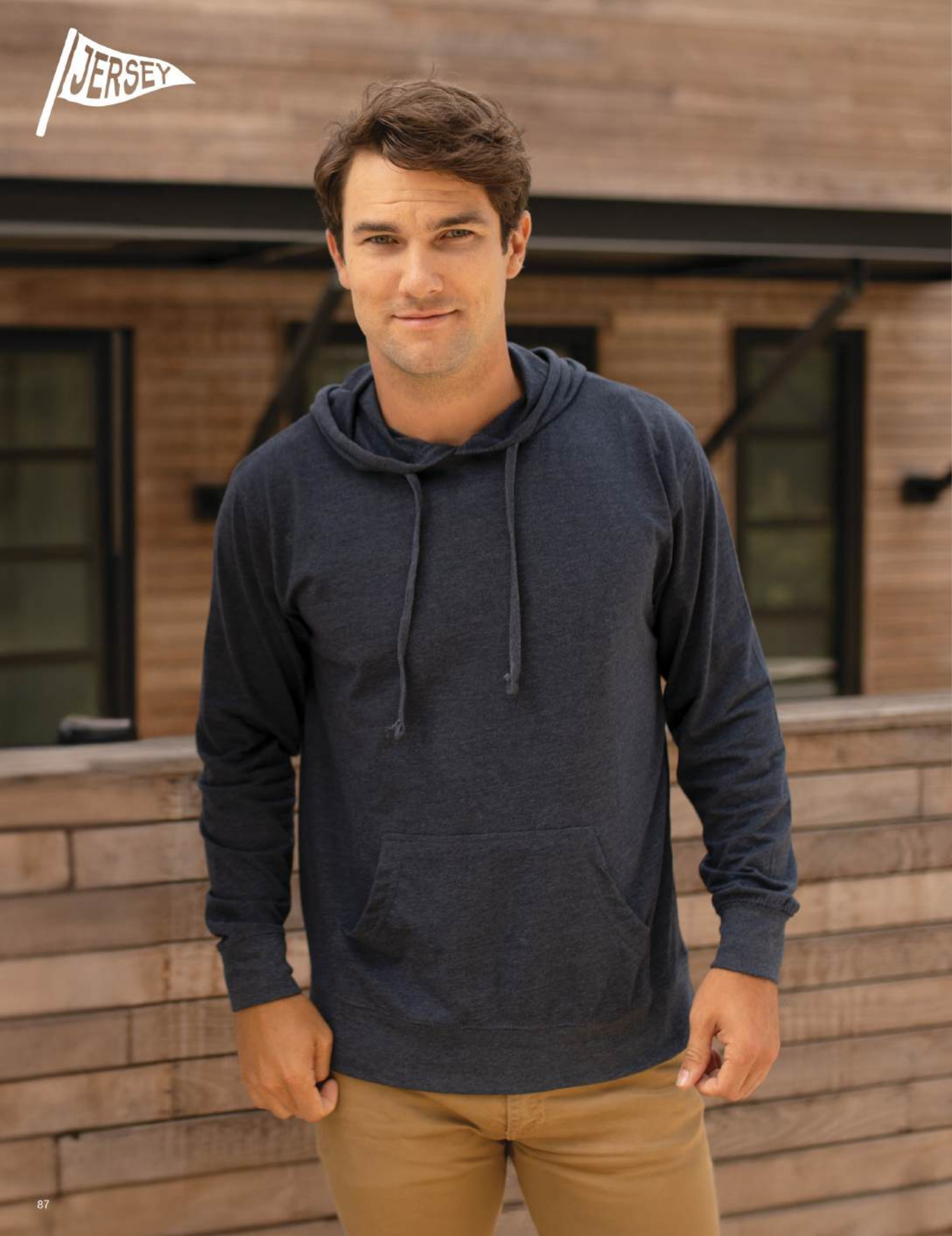


Unisex Lightweight Loopback Terry Crew Neck
XS-3XL | Slim Fit | Lightweight | 250 gm (7.5 oz)

SS1000C

- Cotton/Polyester Blend 3-End Fleece
- Ring Spun Cotton
- 32 Singles Face Yarn
- Loopback Terry Fabric
- 1x1 Ribbing at Cuffs & Waistband
- Twill Neck Tape
- Tear Away Neck Label





Lightweight, Ultra-Soft,
Fleece Alternative.



Color: Classic Navy Heather

Lightweight Jersey Hood

SS150J

XS-3XL | Slim Fit | Lightweight | 150 gm (4.5 oz)

- Cotton/Polyester Blend Jersey
- Black = 100% Cotton

- 30 Singles Yarn
- Split Stitch Double Needle Sewing

- Unlined Hood
- Front Pouch Pocket

- Twill Neck Tape
- Sewn Eyelets

- 1x1 Ribbing At Cuffs & Waistband
- Tear Away Neck Label



Black



Charcoal Heather



Gunmetal Heather



Classic Navy Heather



Olive



Specialty Fabrics, Unique Details & Colors.



PRM3500
Pigment Yellow

MIDWEIGHT

PRM30SBC
PRM33SBP
PRM33SBZ
PRM50PTMW
PRM50PTPD
PRM50PTTD
PRM50STMW
PRM50STPD
PRM50STTD
PRM65DRS
PRM90HT
PRM90HTZ
PRM3500
PRM3500TD
PRM4500
PRM4500MW
PRM4500TD
PRM4600QZ **NEW**
INDBKTSB

LIGHTWEIGHT

PRM20PNT
PRM20SRT
PRM2000
PRM2500
PRM2500Z
PRM2600

JERSEY

PRM180PT **NEW**



NEW PRM180PT

Premium Pigment Dye T-Shirt
XS-4XL | Men's Standard Fit | Lightweight | 180 gm (5.3 oz)

- 100% Ring-Spun Cotton
- 26 Singles
- 1x1 Neck Ribbing
- Jersey Neck Taping
- Tearaway Neck Label



Pigment Black Pigment Slate Blue Pigment Alpine Green Pigment Clay Pigment Cement Pigment Ivory



Black White

180
GSM
T-SHIRT



PIGMENT DYE

EACH T-SHIRT HAS UNIQUE VINTAGE CHARACTER WE ACCOMPLISH WITH OUR SMALL BATCH GARMENT PIGMENT DYEING PROCESS.



Color: Pigment Black



Color: Pigment Ivory



Color: Pigment Slate Blue

PRM4500

Unisex Midweight Pigment Dye Pullover Hood

XS-3XL | Standard Fit | Midweight | 300 gm (9 oz)

- Cotton/Polyester Blend Fleece
- Jersey Lined Hood
- Twill Neck Tape
- Sewn Eyelets
- 100% Cotton 30 Singles Face Yarn
- Split Stitch Double Needle Sewing
- 1x1 Ribbing at Cuffs & Waistband
- Tear Away Neck Label



PIGMENT DYE

EACH SWEATSHIRT HAS UNIQUE VINTAGE CHARACTER WE ACCOMPLISH WITH OUR SMALL BATCH GARMENT PIGMENT DYEING PROCESS.



Color: Pigment Sandstone



Color: Pigment Plum

PRM3500

Unisex Midweight Pigment Dye Crew Neck

XS-3XL | Standard Fit | Midweight | 300 gm (9 oz)

- Cotton/Polyester Blend Fleece
- 100% Cotton 30 Singles Face Yarn
- Split Stitch Double Needle Sewing
- 1x1 Ribbing at Cuffs & Waistband
- Twill Neck Tape



PIGMENT DYE

EACH SWEATSHIRT HAS UNIQUE VINTAGE CHARACTER WE ACCOMPLISH WITH OUR SMALL BATCH GARMENT PIGMENT DYEING PROCESS.

Color: Pigment Yellow



Color: Pigment Ivory



Color: Pigment Sage

Unisex Midweight Pigment Dye Quarter Zip

XS-3XL | Standard Fit | Midweight | 300 gm (9 oz)

PRM4600QZ NEW

- Ring spun cotton
- 100% cotton 30 singles face yarn
- Split stitch double needle sewing
- Twill neck tape
- 1 x 1 ribbing at cuffs & waistband
- Exposed zipper



Color: Pigment Slate Blue

PRM50PTPD

Midweight Pigment Dye Fleece Pant

XS-2XL | Men's Relaxed Fit | Midweight | 300 gm (9 oz)

- Cotton/Polyester Blend
- Ring Spun Cotton
- 100% Cotton 30 Singles Face Yarn
- Elastic Waistband
- Flat Drawcord
- 1x1 Ribbing at Ankle Cuffs
- Sewn Eyelets
- Sewn Fly Detail
- Back Pocket
- Jersey Lined Hand Pockets



Pigment Black



Pigment Maroon



Pigment Slate Blue



Pigment Alpine Green



Pigment Sandstone



Pigment Light Blue



Pigment Mint



Pigment Pink



Pigment Yellow



Prepared For Dye



Color: Pigment Sandstone



Color: Pigment Slate Blue

PIGMENT DYE



Color: Pigment Slate Blue

PRM50STPD

Midweight Pigment Dye Fleece Short

XS-2XL | Men's Relaxed Fit | Midweight | 300 gm (9 oz)

- Cotton/Polyester Blend
- Ring Spun Cotton
- 100% Cotton 30 Singles Face Yarn
- Elastic Waistband
- Flat Drawcord
- Sewn Eyelets
- Sewn Fly Detail
- Back Pocket
- Jersey Lined Hand Pockets
- Tapered Knee Opening



Pigment Black



Pigment Sandstone



Pigment Slate Blue



Pigment Light Blue



Pigment Alpine Green



Pigment Mint



Prepared For Dye



PRM2600

California Wave Wash Sunday Hoodie

XS-2XL | Women's Boxy Fit | Drop Shoulder | Lightweight | 230 gm (7 oz)

- Cotton/Polyester Blend
- No Drawcords
- 1x1 Ribbing at Cuffs & Waistband
- Blindstitch Sewing
- 3-End Fleece
- Jersey Lined Hood
- Twill Neck Tape
- Heavy Garment Wash for Softness
- Blind Stitch + Coverstitch Sewing
- Drop Shoulder
- Hip Height Boxy Fit
- Woven Neck Label

Screen Printer Note: This fabric is not made of 100% Cotton face yarn



Black



Sage



Bone



Color: Black



California Wave Wash Fabric One of a kind fit, feel, and color tone.



- Hip Height
- Boxy Fit
- Drop Shoulder
- No Drawcord
- 1-Piece Hood



Color: Sage

PRM2500

California Wave Wash Pullover Hood

XS-2XL | Women's Standard Fit | Lightweight | 230 gm (7 oz)

- Cotton/Polyester Blend
- Raglan Sleeves
- Sewn Eyelets
- Heavy Garment Wash for Softness
- 3-End Fleece
- Blind Stitch + Coverstitch Sewing
- Twill Neck Tape
- Woven Neck Label

Screen Printer Note: This fabric is not made of 100% Cotton face yarn.



Black



Shadow



Bone



Blush



Dusty Rose



Misty Blue



Sage



Forest Camo Heather



Black Camo Heather



Color: Misty Blue



Color: Black Camo Heather



California Wave Wash
One of a kind fit, feel,
and color tone.



Color: Forest Camo Heather



Color: Bone



Color: Sage



Color: Blush



California Wave Wash
A sense of a kind fit, feel,
and a soft color tone



PRM2500Z

California Wave Wash Zip Hood

XS-2XL | Women's Standard Fit | Lightweight | 230 gm (7 oz)

- Cotton/Polyester Blend
- Raglan Sleeves
- Sewn Eyelets
- Antique Nickel Exposed Zipper
- Woven Neck Label
- 3-End Fleece
- Blind Stitch + Coverstitch Sewing
- Twill Neck Tape
- Heavy Garment Wash for Softness

Screen Printer Note: This fabric is not made of 100% Cotton face yarn.



Black

Shadow

Misty Blue

Sage

Dusty Rose

Blush

Bone

California Wave Wash Crew Neck

XS-2XL | Women's Standard Fit | Lightweight | 230gm (7 oz)

PRM2000

- Cotton/Polyester Blend
- Raglan Sleeves
- Heavy Garment Wash for Softness
- 3-End Fleece
- Blind Stitch + Coverstitch Sewing
- Woven Neck Label

Screen Printer Note: This fabric is not made of 100% Cotton face yarn.



Black

Shadow

Misty Blue

Sage

Dusty Rose

Blush

Bone



California Wave Wash
One of a kind fit, feel,
and color tone.



PRM20PNT

California Wave Wash Pant

XS-2XL | Women's Standard Fit | Lightweight | 230 gm (7 oz)

- Cotton/Polyester Blend
- 3-End Fleece
- Blind Stitch + Coverstitch Sewing
- Elastic Waistband
- Shoestring Drawcord
- 1x1 Ribbing at Ankle Cuffs
- Sewn Eyelets
- Jersey Lined Hand Pockets
- Heavy Garment Wash for Softness
- Woven Waist Label

Screen Printer Note: This fabric is not made of 100% Cotton face yarn.



Black



Shadow



Misty Blue



Sage



Dusty Rose



Blush



Bone



Forest Camo Heather



Black Camo Heather



PRM20SRT

California Wave Wash Short

XS-2XL | Women's Standard Fit | Lightweight | 230 gm (7 oz)

- Cotton/Polyester Blend
- 3-End Fleece
- Blind Stitch + Coverstitch Sewing
- Elastic Waistband
- Shoestring Drawcord
- Sewn Eyelets
- Jersey Lined Hand Pockets
- Heavy Garment Wash for Softness
- Woven Waist Label

Screen Printer Note: This fabric is not made of 100% Cotton face yarn.



Black



Shadow



Misty Blue



Sage



Dusty Rose



Blush



Bone



Forest Camo Heather



Black Camo Heather



Color: Sage



California Wave Wash
One of a kind fit, feel,
and color tone.



Color: Sage



Color: Tie Dye Black



Color: Tie Dye Olive

PRM4500TD | Tie Dye Pullover Hood

XS-3XL | Unisex Standard Fit | Midweight | 300 gm (9 oz)

- Cotton/Polyester Blend Fleece
- Jersey Lined Hood
- Twill Neck Tape
- 1x1 Ribbing at Waistband
- 100% Cotton 30 Singles Face Yarn
- Split Stitch Double Needle Sewing
- 1x1 Ribbing at Cuffs
- Sewn Eyelets

Tie Dye Crew Neck | PRM3500TD

XS-3XL | Unisex Standard Fit | Midweight | 300 gm (9 oz)

- Cotton/Polyester Blend Fleece
- Split Stitch Double Needle Sewing
- 1x1 Ribbing at Cuffs
- 100% Cotton 30 Singles Face Yarn
- Twill Neck Tape
- 1x1 Ribbing at Waistband



Tie Dye Black



Tie Dye Navy



Tie Dye Aqua Blue



Tie Dye Pink



Tie Dye Dusty Pink



Tie Dye Olive



Tie Dye Cotton Candy



Tie Dye Sunset Swirl



Tie Dye Black



Tie Dye Navy



Tie Dye Aqua Blue



Tie Dye Pink



Tie Dye Dusty Pink



Tie Dye Olive



Tie Dye Cotton Candy



Tie Dye Sunset Swirl

PRM50PTTD

Tie Dye Fleece Pant

XS-2XL | Men's Relaxed Fit | Midweight | 300 gm (9 oz)

- Cotton/Polyester Blend Fleece
- 100% Cotton 30 Singles Face Yarn
- Elastic Waistband
- Flat Drawcord
- 1x1 Ribbing at Ankle Cuffs
- Sewn Eyelets
- Sewn Fly Detail
- Back Pocket
- Jersey Lined Hand Pockets



Tie Dye Black



TIE DYE NAVY



Tie Dye Aqua Blue



Tie Dye Pink



Tie Dye Cotton Candy



Tie Dye Sunset Swirl



Color: Tie Dye Black



PRM50STTD

Tie Dye Fleece Short

XS-2XL | Men's Relaxed Fit | Midweight | 300 gm (9 oz)

- Cotton/Polyester Blend Fleece
- 100% Cotton 30 Singles Face Yarn
- Elastic Waistband
- Flat Drawcord
- Sewn Eyelets
- Sewn Fly Detail
- Back Pocket
- Jersey Lined Hand Pockets
- Tapered Knee Opening



Tie Dye Black



Tie Dye Navy



Color: Tie Dye Black



Color: Tie Dye Navy

PRM4500MW

Mineral Wash Pullover Hood

XS-2XL | Unisex Standard Fit | Midweight | 300 gm (9 oz)

- Cotton/Polyester Blend Fleece
- 100% Cotton 30 Singles Face Yarn
- Jersey Lined Hood
- Flat Drawcord
- Split Stitch Double Needle Sewing
- Twill Neck Tape
- 1x1 Ribbing at Cuffs & Waistband
- Sewn Eyelets



Mineral Wash Black



PRM50PTMW

Mineral Wash Fleece Pant

XS-2XL | Men's Relaxed Fit | Midweight | 300 gm (9 oz)

- Cotton/Polyester Blend Fleece
- 100% Cotton 30 Singles Face Yarn
- Elastic Waistband
- Flat Drawcord
- 1x1 Ribbing at Ankle Cuffs
- Sewn Eyelets
- Sewn Fly Detail
- Back Pocket
- Jersey Lined Hand Pockets



Mineral Wash Black



PRM50STMW

Mineral Wash Fleece Short

XS-2XL | Men's Relaxed Fit | Midweight | 300 gm (9 oz)

- Cotton/Polyester Blend Fleece
- 100% Cotton 30 Singles Face Yarn
- Elastic Waistband
- Flat Drawcord
- Sewn Eyelets
- Sewn Fly Detail
- Back Pocket
- Jersey Lined Hand Pockets
- Tapered Knee Opening



Mineral Wash Black



Color: Salt & Pepper



Color: Sky Heather



Color: Salt & Pepper

PRM90HT French Terry Pullover Hood

XS-2XL | Unisex Slim Fit | Midweight | 250 gm (7.5 oz)

- Pre-Laundered Fabric
- Cotton/Polyester Blend French Terry
- 32 Singles Face Yarn
- Unlined Hood
- Split Stitch Double Needle Sewing
- 1x1 Ribbing at Cuffs
- 1x1 Ribbing at Waistband
- 1x1 Ribbing at Side Panels
- Antique Nickel Eyelets
- Double Shoelace Drawcords
- Antique Nickel Drawcord Tips
- Media Pocket
- Thumbholes at Cuffs
- Twill Neck Tape

Screen Printer Note: This fabric is not made of 100% Cotton face yarn.



Black Charcoal Heather Salt & Pepper Navy Heather Burgundy Heather



Burnt Orange Heather Golden Wheat Heather Sky Heather Oatmeal Heather

French Terry Zip Hood

XS-3XL | Unisex Slim Fit | Midweight | 250 gm (7.5 oz)

PRM90HTZ

- Pre-Laundered Fabric
- Cotton/Polyester Blend French Terry
- 32 Singles Face Yarn
- Unlined Hood
- Split Stitch Double Needle Sewing
- 1x1 Ribbing at Cuffs
- 1x1 Ribbing at Waistband
- Antique Nickel Eyelets
- Shoelace Drawcords
- Antique Nickel Drawcord Tips
- #5 Antique Nickel Exposed Zipper
- Media Pocket
- Thumbholes at Cuffs
- Twill Neck Tape

Screen Printer Note: This fabric is not made of 100% Cotton face yarn.



Black Charcoal Heather Salt & Pepper Navy Heather Burgundy Heather



Olive Heather (XS-2XL) Burnt Orange Heather (XS-2XL) Golden Wheat Heather (XS-2XL) Sky Heather (XS-2XL) Oatmeal Heather (XS-2XL)

PRM33SBP

Special Blend Raglan Pullover Hood

XS-3XL | Unisex Slim Fit | Midweight | 270 gm (8 oz)

- Cotton/Polyester Blend
- 30 Singles C/P Blend Face Yarn
- Raglan Sleeves
- Unlined Hood
- Reverse Coverstitch Sewing
- Twill Neck Tape
- 1x1 Ribbing at Cuffs & Waistband
- Sewn Eyelets
- Flat Drawcords
- Self Fabric Side Panel Inserts

Screen Printer Note: This fabric is not made of 100% Cotton face yarn.



Black Carbon Heather Nickel Heather



Midnight Heather Crimson Heather Moss Heather



Classic Navy Maroon Pacific Heather



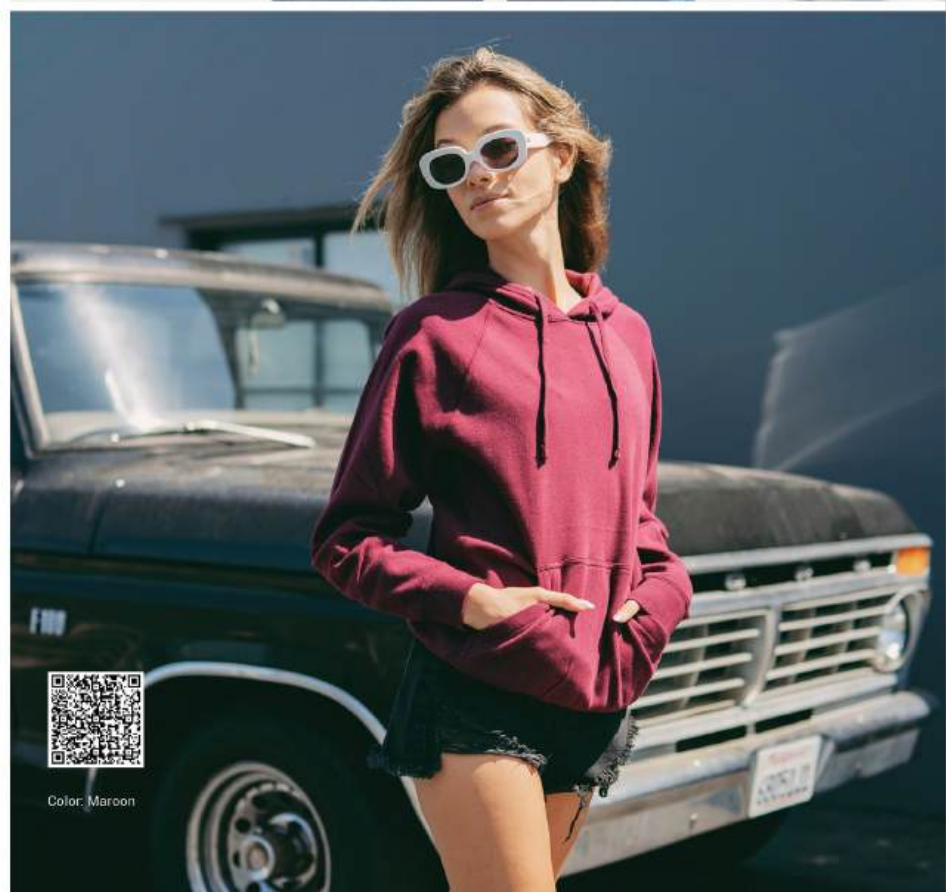
Pomegranate Heather Sea Green Heather Stone Heather



Nickel Heather / Black Nickel Heather / Forest Camo Red Buffalo Plaid



Color: Stone Heather



Color: Maroon



Special Blend



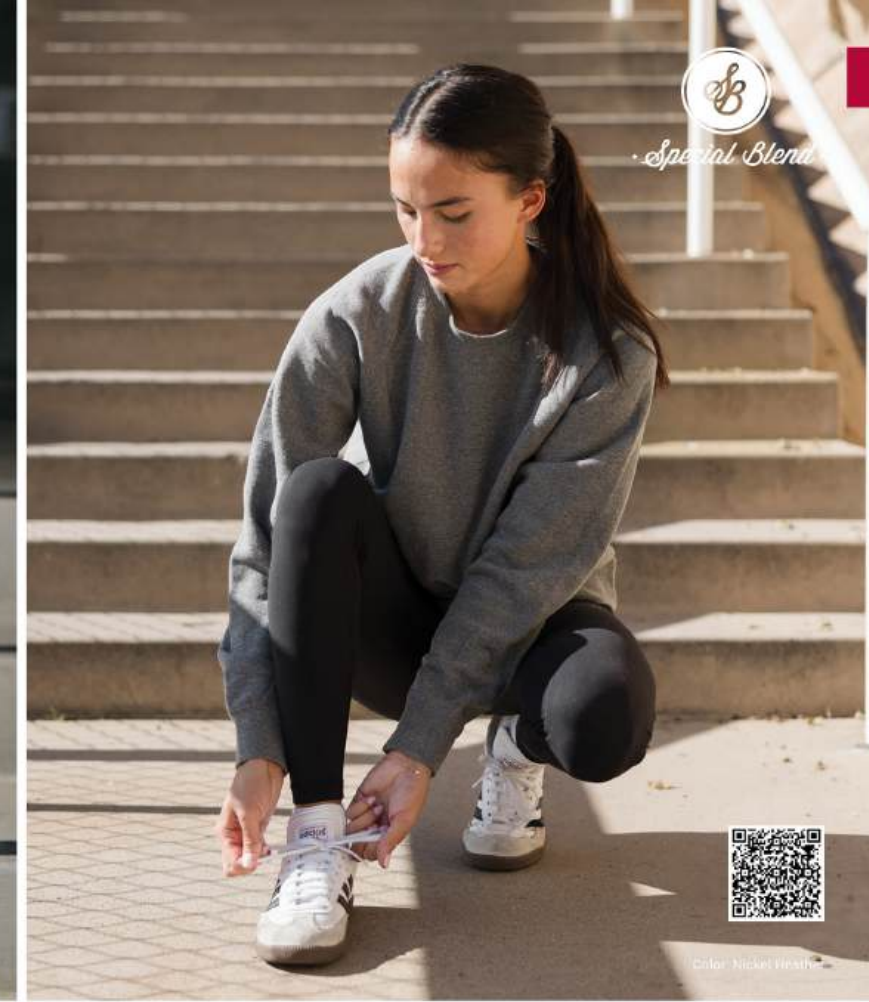
Color: Stone Heather



Color: Midnight Heather



Color: Stone Heather



Color: Nickel Heather

PRM33SBZ | Special Blend Raglan Zip Hood

XS-3XL | Unisex Slim Fit | Midweight | 270 gm (8 oz)

- Cotton/Polyester Blend
- 30 Singles C/P Blend Face Yarn
- Raglan Sleeves
- Unlined Hood
- Reverse Coverstitch Sewing
- #5 Antique Nickel Kissing Zipper
- Twill Neck Tape
- 1x1 Ribbing at Cuffs & Waistband
- Sewn Eyelets
- Flat Drawcords
- Self Fabric Side Panel Inserts

Screen Printer Note: This fabric is not made of 100% Cotton face yarn.



Special Blend Raglan Crew Neck | **PRM30SBC**

XS-3XL | Unisex Slim Fit | Midweight | 270 gm (8 oz)

- Cotton/Polyester Blend
- 30 Singles C/P Blend Face Yarn
- Raglan Sleeves
- Reverse Coverstitch Sewing
- Twill Neck Tape
- 1x1 Ribbing at Cuffs & Waistband
- Self Fabric Side Panel Inserts

Screen Printer Note: This fabric is not made of 100% Cotton face yarn.





Special Blend



Color: Nickel



Color: Forest Camo



Special Blend



Color: Red Buffalo Plaid

PRM65DRS | Special Blend Pullover Hood Dress

XS-2XL | Women's Slim Fit | Midweight | 270 gm (8 oz)

- Cotton/Polyester Blend Fleece
- Split Stitch Double Needle Sewing
- Sewn Eyelets
- Double Flat Drawcords
- Front Pouch
- Unlined Hood
- 1x1 Ribbing at Cuffs & Waistband
- Crossover Neck
- Thumbholes at Cuffs

Screen Printer Note: This fabric is not made of 100% Cotton face yarn.



Black

Carbon

Nickel

Maroon

Special Blend 6'6" Stadium Blanket | INDBKTSB

62" x 78" | Midweight | 270 gm (8 oz)

- Cotton/Polyester Special Blend Fleece
- 1" Self Hem
- 30 Singles C/P Blend Face Yarn
- Double Needle Top Stitch Sewing

Screen Printer Note: This fabric is not made of 100% Cotton face yarn.



Black

Carbon Heather

Nickel Heather

Midnight Heather

Pacific Heather

Pomegranate Heather

Sea Green Heather

Forest Camo

Red Buffalo Plaid

Youth

COLLECTION

Quality, Standard Fit & Popular Colors.



PRM1500Y
Pigment Sandstone

MIDWEIGHT

PRM1500Y
PRM1500TD
SS4001Y
SS4001YZ

LIGHTWEIGHT

EXP24YWZ
PRM10TSB
PRM10TSBC
PRM10TSBZ
PRM11PNT
PRM11SRT
PRM15YSB
PRM15YSBC
PRM15YSBZ
PRM16PNT
PRM16SRT





PIGMENT DYED

Color: Pigment Sandstone



EACH SWEATSHIRT HAS UNIQUE VINTAGE CHARACTER WE ACCOMPLISH WITH OUR SMALL BATCH GARMENT PIGMENT DYING PROCESS.

Color: Pigment Slate Blue & Pigment Mint



Color: Tie Dye Aqua Blue

PRM1500Y Youth Pigment Dye Pullover Hood
XS-XL | Standard Fit | Midweight | 300 gm (9 oz)

- Cotton/Polyester Blend Fleece
- Jersey Lined Hood
- Twill Neck Tape
- 100% Cotton 30 Singles Face Yarn
- Split Stitch Double Needle Sewing
- 1x1 Ribbing at Cuffs & Waistband

PRM1500TD Youth Tie Dye Pullover Hood
XS-XL | Standard Fit | Midweight | 300 gm (9 oz)

- Cotton/Polyester Blend Fleece
- Jersey Lined Hood
- Twill Neck Tape
- 100% Cotton 30 Singles Face Yarn
- Split Stitch Double Needle Sewing
- 1x1 Ribbing at Cuffs & Waistband



Pigment Black Pigment Maroon Pigment Slate Blue Pigment Alpine Green Pigment Sandstone



Pigment Light Blue Pigment Mint Pigment Pink Pigment Yellow



Tie Dye Black Tie Dye Navy Tie Dye Aqua Blue Tie Dye Pink



Tie Dye Cotton Candy Tie Dye Sunset Swirl

SS4001Y Youth Midweight Pullover Hood

S-XL | Standard Fit | Midweight | 280 gm (8.5 oz)

- Cotton/Polyester Blend 3-End Fleece
- Split Stitch Double Needle Sewing
- 1x1 Ribbing at Cuffs
- Ring Spun Cotton
- Jersey Lined Hood
- 1x1 Ribbing at Waistband
- 100% Cotton 32 Singles Face Yarn
- Twill Neck Tape
- No Drawcord



Color: Classic Navy

EXP24YWZ Youth Windbreaker Jacket

XS-XL | Standard Fit | Lightweight | 82 gm

- 100% Polyester
- Water Resistant Fabric
- Matte Finish Eyelets & Zippers
- #4 Zipper w/ Zipper Pull
- Rubber Zipper Pull Tab
- Reversed Zipper Tape
- Fine Mesh Hood Liner
- Three Panel Hood
- Blizzard Neck
- Self Neck Tape
- Welt Pockets w/ Mesh Pocket Bags
- Tightening Toggle at Waistband
- Elastic Cuffs
- Locker Loop at Center Back Neck



Color: Maroon



Color: Maroon / Classic Navy



Color: Black / Forest Camo

SS4001YZ Youth Midweight Zip Hood

S-XL | Standard Fit | Midweight | 280 gm (8.5 oz)

- Cotton/Polyester Blend 3-End Fleece
- Jersey Lined Hood
- #5 Metal Kissing Zipper
- Ring Spun Cotton
- Twill Neck Tape
- No Drawcord
- 100% Cotton 32 Singles Face Yarn
- 1x1 Ribbing at Cuffs
- Split Stitch Double Needle Sewing
- 1x1 Ribbing at Waistband





Special Blend



Color: Nickel Heather / Forest Camo



Color: Pomegranate Heather



Special Blend

Color: Midnight Heather



Color: Nickel Heather

PRM15YSB Youth Special Blend Raglan Pullover Hood

XS-XL | Standard Fit | Lightweight | 210 gm (6.5 oz)

- Cotton/Polyester Blend
- 32 Singles C/P Blend Face Yarn
- Raglan Sleeves
- Unlined Hood
- Split Stitch Double Needle Sewing
- Twill Neck Tape
- 1x1 Ribbing at Cuffs & Waistband
- No Drawcord

Screen Printer Note: This fabric is not made of 100% Cotton face yarn.



Youth Special Blend Raglan Zip Hood | PRM15YSBZ

XS-XL | Standard Fit | Lightweight | 210 gm (6.5 oz)

- Cotton/Polyester Blend
- 32 Singles C/P Blend Face Yarn
- Raglan Sleeves
- Unlined Hood
- Split Stitch Double Needle Sewing
- Twill Neck Tape
- #5 DTM Coil Kissing Zipper
- Nickel Zipper Pull
- 1x1 Ribbing at Cuff & Waistband

Screen Printer Note: This fabric is not made of 100% Cotton face yarn.



Youth Special Blend Raglan Crew Neck | PRM15YSBC

XS-XL | Standard Fit | Lightweight | 210 gm (6.5 oz)

- Cotton/Polyester Blend
- 32 Singles C/P Blend Face Yarn
- Raglan Sleeves
- Split Stitch Double Needle Sewing
- Twill Neck Tape
- 1x1 Ribbing at Collar & Cuffs

Screen Printer Note: This fabric is not made of 100% Cotton face yarn.





PRM10TSB | Toddler Special Blend Raglan Pullover Hood
2T, 4T, 5/6 | Standard Fit | Lightweight | 210 gm (6.5 oz)

- Cotton/Polyester Blend
- Raglan Sleeves
- Split Stitch Double Needle Sewing
- 1x1 Ribbing at Cuffs & Waistband
- 32 Singles C/P Blend Face Yarn
- Unlined Hood
- Twill Neck Tape
- No Drawcord

Screen Printer Note: This fabric is not made of 100% Cotton face yarn.



Color: Nickel Heather / Carbon Heather, Carbon Heather / Black



Toddler Special Blend Raglan Zip Hood | **PRM10TSBZ**
2T, 4T, 5/6 | Standard Fit | Lightweight | 210 gm (6.5 oz)

- Cotton/Polyester Blend
- Raglan Sleeves
- Split Stitch Double Needle Sewing
- Twill Neck Tape
- Unlined Hood
- Split Stitch Double Needle Sewing
- Twill Neck Tape
- #5 DTM Coil Kissing Zipper
- Nickel Zipper Pull
- 1x1 Ribbing at Cuff & Waistband

Screen Printer Note: This fabric is not made of 100% Cotton face yarn.



Color: Pomegranate Heather

Toddler Special Blend Raglan Crew Neck | **PRM10TSBC**
2T, 4T, 5/6 | Standard Fit | Lightweight | 210 gm (6.5 oz)

- Cotton/Polyester Blend
- Raglan Sleeves
- Twill Neck Tape
- 32 Singles C/P Blend Face Yarn
- Split Stitch Double Needle Sewing
- 1x1 Ribbing at Collar & Cuffs

Screen Printer Note: This fabric is not made of 100% Cotton face yarn.





Color: Black



Color: Forest Camo Heather



Color: Black



Color: Nickel Heather

PRM16PNT

Youth Special Blend Pant

XS-XL | Standard Fit | Lightweight | 210 gm (6.5 oz)



PRM11PNT

Toddler Special Blend Pant

2T, 4T, 5/6 | Standard Fit | Lightweight | 210 gm (6.5 oz)



PRM16SRT

Youth Special Blend Short

XS-XL | Standard Fit | Lightweight | 210 gm (6.5 oz)



PRM11SRT

Toddler Special Blend Short

2T, 4T, 5/6 | Standard Fit | Lightweight | 210 gm (6.5 oz)



Black

Nickel Heather

Forest Camo Heather



Black

Nickel Heather

Forest Camo Heather



Black

Nickel Heather

Forest Camo Heather

Black

Nickel Heather

Forest Camo Heather

- Cotton/Polyester Blend
- 32 Singles C/P Blend Face Yarn
- Elastic Waistband
- Flat Drawcord
- Sewn Eyelets
- Sewn Fly Detail

- Back Pocket
- Jersey Lined Hand Pockets
- Ribbing at Ankle Cuffs
- Tear Away Label

- Cotton/Polyester Blend
- 32 Singles C/P Blend Face Yarn
- Elastic Waistband
- Flat Drawcord
- Sewn Eyelets
- Sewn Fly Detail

- Back Pocket
- Jersey Lined Hand Pockets
- Tapered Knee Opening
- Tear Away Label

Screen Printer Note: This fabric is not made of 100% Cotton face yarn.

Screen Printer Note: This fabric is not made of 100% Cotton face yarn.

STYLE INDEX

INDEPENDENT



IND5000P Premium Heavyweight Pullover Hood 13 Colors / Pg. 11
IND5000C Premium Heavyweight Crew 13 Colors / Pg. 13
INDLUXHOOD LUX Heavyweight Modal Hood 2 Colors / Pg. 15
INDLUXCREW LUX Heavyweight Modal Crew 2 Colors / Pg. 16
IND4000 Heavyweight Pullover Hood 45 Colors / Pg. 17
IND4000Z Heavyweight Zip Hood 12 Colors / Pg. 19
IND3000 Heavyweight Crew Neck 15 Colors / Pg. 20
IND330BLV Boulevard 330gm Heavyweight Pullover Hood 6 Colors / Pg. 21
IND330PNT 10oz. Heavyweight Fleece Pant 1 Color / Pg. 23
IND50TEE LUX Heavyweight 50 Singles Interlock Tee 1 Color / Pg. 24

AFX



IND420XD Mainstreet 420gm Heavyweight Pullover Hood 7 Colors / Pg. 25
IND280SL Avenue 280gm Midweight Pullover Hood 10 Colors / Pg. 27
IND20PNT Midweight Fleece Pant 14 Colors / Pg. 29
IND20SRT Midweight Fleece Short 9 Colors / Pg. 30
IND40RP Lightweight Raglan Pullover Hood 8 Colors / Pg. 31
IND45UVZ Unisex Heavyweight Varsity Zip Hood 2 Colors / Pg. 32
INDDUFBAG Day Tripper 29L Duffel Bag 10 Colors / Pg. 33
AFX90UN Unisex Lightweight Fitted Pullover Hood 14 Colors / Pg. 37
AFX90UNZ Unisex Lightweight Fitted Zip Hood 13 Colors / Pg. 39
AFX24CRPC Women's Lightweight Crop Crew 8 Colors / Pg. 41

EXPEDITION



AFX64CRP Women's Lightweight Crop Hoodie 8 Colors / Pg. 43
EXP54LWP Lightweight Windbreaker Anorak Jacket 8 Colors / Pg. 47
EXP54LWZ Lightweight Windbreaker Jacket 20 Colors / Pg. 49
EXP64CRP Women's Lightweight Crop Pullover Windbreaker 4 Colors / Pg. 51
EXP52BMR Lightweight Bomber Jacket 3 Colors / Pg. 52
EXP50F Flannel Shirt 4 Colors / Pg. 53
EXP550Z Canvas Workwear Jacket 2 Colors / Pg. 55
EXP560V Canvas Workwear Vest 2 Colors / Pg. 56
EXP100PFZ Hyper-Loft Puffy Jacket 1 Color / Pg. 57
EXP120PFV Hyper-Loft Puffy Vest 1 Color / Pg. 57



EXP200PFZ Women's Hyper-Loft Puffy Jacket 1 Color / Pg. 58
EXP220PFV Women's Hyper-Loft Puffy Vest 1 Color / Pg. 58
EXP95NB Heavyweight Windbreaker Jacket 5 Colors / Pg. 59
EXP99CNB Heavyweight Windbreaker Coaches Jacket 5 Colors / Pg. 60
EXP94NAW Water Resistant Windbreaker Anorak Jacket 5 Colors / Pg. 61
EXP35SSZ Poly-Tech Soft Shell Jacket 2 Colors / Pg. 63
EXP80PTZ Heavyweight Poly-Tech Zip Hood 1 Color / Pg. 64
EXP70PTZ Unisex Lightweight Poly-Tech Zip Track Jacket 5 Colors / Pg. 65
EXP60PAZ Women's Lightweight Poly-Tech Zip 5 Colors / Pg. 66
EXP90SHZ Unisex Heavyweight Sherpa Lined Heathered Zip Hood 6 Colors / Pg. 67

STANDARD SUPPLY



EXP40SHZ Heavyweight Sherpa Lined Zip Hood 1 Color / Pg. 68
EXP10PANT Perform Fleece Pant 4 Color / Pg. 70
EXP15WPQ Women's Perform Quarter Zip 4 Color / Pg. 71
EXP20PQ Perform Quarter Zip 4 Color / Pg. 72
EXP25PH Perform Pullover Hood 4 Color / Pg. 73
EXP30PZ Perform Zip Hood 4 Color / Pg. 74
SS4600QZ Midweight Quarter Zip 8 Colors / Pg. 77
SS4500 Midweight Pullover Hood 42 Colors / Pg. 79
SS4500Z Midweight Zip Hood 16 Colors / Pg. 81
SS3000 Midweight Crew Neck 25 Colors / Pg. 82

PREMIUM



SS1000 Unisex Lightweight Loopback Terry Pullover Hood 12 Colors / Pg. 83
SS1000Z Unisex Lightweight Loopback Terry Zip Hood 12 Colors / Pg. 85
SS1000C Unisex Lightweight Loopback Terry Crew Neck 12 Colors / Pg. 86
SS150J Lightweight Jersey Pullover Hood 5 Colors / Pg. 87
PRM180PT Premium Pigment Dye T-Shirt 8 Colors / Pg. 91
PRM4500 Unisex Midweight Pigment Dye Pullover Hood 18 Colors / Pg. 93
PRM3500 Unisex Midweight Pigment Dye Crew Neck 18 Colors / Pg. 95
PRM4600QZ Unisex Midweight Pigment Dye Quarter Zip 5 Colors / Pg. 96
PRM50PTPD Pigment Dye Fleece Pant 10 Colors / Pg. 97
PRM50STPD Pigment Dye Fleece Short 7 Colors / Pg. 98



PRM2600 Sunday California Wave Wash Hoodie 3 Colors / Pg. 99
PRM2500 Women's California Wave Wash Pullover Hood 9 Colors / Pg. 101
PRM2500Z Women's California Wave Wash Zip Hood 7 Colors / Pg. 103
PRM2000 Women's California Wave Wash Crew 7 Colors / Pg. 104
PRM20PNT Women's California Wave Wash Fleece Pant 9 Colors / Pg. 105
PRM20SRT Women's California Wave Wash Fleece Short 9 Colors / Pg. 107
PRM4500TD Unisex Midweight Tie Dye Pullover Hood 8 Colors / Pg. 109
PRM3500TD Unisex Midweight Tie Dye Crew Neck 8 Colors / Pg. 110
PRM50PTTD Men's Tie Dye Fleece Pant 6 Colors / Pg. 111
PRM50STTD Men's Tie Dye Fleece Short 2 Colors / Pg. 112



PRM4500MW Unisex Midweight Mineral Wash Pullover Hood 1 Color / Pg. 113
PRM50PTMW Men's Mineral Wash Fleece Pant 1 Color / Pg. 114
PRM50STMW Men's Mineral Wash Fleece Short 1 Color / Pg. 114
PRM90HT Unisex Midweight French Terry Pullover Hood 9 Colors / Pg. 115
PRM90HTZ Unisex Midweight French Terry Zip Hood 10 Colors / Pg. 116
PRM33SBP Unisex Midweight Special Blend Raglan Pullover Hood 15 Colors / Pg. 117
PRM33SBZ Unisex Midweight Special Blend Raglan Zip Hood 14 Colors / Pg. 119
PRM30SBC Unisex Midweight Special Blend Raglan Crew 14 Colors / Pg. 120
PRM65DRS Women's Midweight Special Blend Pullover Hood Dress 4 Colors / Pg. 121
INDBKTSB Midweight Special Blend Blanket 9 Colors / Pg. 122

YOUTH



PRM1500Y Youth Midweight Pigment Dye Pullover Hood 9 Colors / Pg. 125
PRM1500TD Youth Midweight Tie Dye Pullover Hood 6 Colors / Pg. 126
SS4001Y Youth Midweight Pullover Hood 20 Colors / Pg. 127
SS4001YZ Youth Midweight Zip Hood 10 Colors / Pg. 127
EXP24YWZ Youth Lightweight Windbreaker Jacket 4 Colors / Pg. 128
PRM15YSB Youth Lightweight Special Blend Raglan Pullover Hood 10 Colors / Pg. 129
PRM15YSBZ Youth Lightweight Special Blend Raglan Zip Hood 7 Colors / Pg. 130
PRM15YSBC Youth Lightweight Special Blend Raglan Crew Neck 4 Colors / Pg. 130
PRM10TSB Toddler Lightweight Special Blend Raglan Pullover Hood 10 Colors / Pg. 131
PRM10TSBZ Toddler Lightweight Special Blend Raglan Zip Hood 7 Colors / Pg. 132



PRM10TSBC Toddler Lightweight Special Blend Raglan Crew Neck 4 Colors / Pg. 132
PRM16PNT Youth Lightweight Special Blend Pant 3 Colors / Pg. 133
PRM11PNT Toddler Lightweight Special Blend Pant 3 Colors / Pg. 133
PRM16SRT Youth Lightweight Special Blend Short 3 Colors / Pg. 134
PRM11SRT Toddler Lightweight Special Blend Short 3 Colors / Pg. 134

COLOR SWATCH LIBRARY

Catalog colors may vary due to printing. Swatch cards are available upon request. Patterns shown are not actual size.



BASIC FLEECE >



BLACK PMS BLACK C
CHARCOAL HEATHER PMS 433 C
ASPHALT PMS 4287 C
SOLID CHARCOAL PMS 431 C
GUNMETAL HEATHER PMS 424 C
SALT-N-PEPPER COOL GREY 9 C
GREY HEATHER PMS 429 C
SMOKE PMS 2330 C
WHITE



SLATE BLUE PMS 2965 C
CLASSIC NAVY PMS 5395 C
NAVY PMS 296 C
NAVY HEATHER PMS 296 C
CLASSIC NAVY HEATHER PMS 296 C
STORM BLUE PMS 4138 C
BLUE MAGIC PMS 5425 C
COBALT PMS 286 C
ROYAL PMS 287 C



ROYAL HEATHER PMS 294 C
TURQUOISE PMS 638 C
BLUE AQUA PMS 2905 C
SKY HEATHER PMS 659 C
MISTY BLUE 17-4021 TCX
LAVENDER PMS 2567 C
PLUM PMS 7653 C
PURPLE PMS 273 C
LT. BLACKBERRY PMS 262 C



BURGUNDY HEATHER PMS 1817 C
MAROON PMS 490 C
CURRANT PMS 195 C
CARDINAL PMS 209 C
BRICK RED PMS 201 C
RED PMS 200 C
RED HEATHER PMS 1955 C
ORCHID PMS 4106 C
DUSTY ROSE 17-1520 TCX



DUSTY PINK PMS 7605 C
BLUSH 13-1408 TCX
LIGHT PINK PMS 217 C
BURNT ORANGE HEATHER PMS 1605 C
ORANGE PMS 172 C
RUST PMS 180 C
PEACH PMS 148 C
GOLDEN WHEAT HEATHER PMS 465 C
GOLD 15-1058 TCX



LIGHT YELLOW PMS 461 C
HONEYDEW PMS 2274 C
MINT PMS 318 C
DUSTY SAGE PMS 4183 C
KELLY GREEN PMS 348 C
KELLY GREEN HEATHER PMS 3415 C
DARK GREEN PMS 3435 C
FOREST GREEN PMS 560 C
ALPINE GREEN PMS 567 C



OLIVE PMS 4226 C
OLIVE HEATHER PMS 4224 C
ARMY PMS 4228 C
ARMY HEATHER PMS 5747 C
BROWN PMS 7596 C
CLAY PMS 4049 C
SADDLE PMS 2319 C
SANDSTONE PMS 7504 C
CEMENT WARM GREY 5 C



IVORY 13-0003 TCX
BONE 11-0604 TCX
OATMEAL HEATHER PMS 7527 C
OATMEAL HTHR / SALT & PEPPER PMS 7527 C & COOL GREY 9 C
SAFETY YELLOW 13-0443 TCX
SAFETY ORANGE 16-1364 TCX
NEON PINK 17-2033 TCX
NATURAL SHERPA PMS 468 C
HOUNDSTOOTH

BASIC FLEECE (CONTINUED) >



FOREST CAMO
BLACK CAMO
ARMY CAMO
SNOW CAMO
TIGER CAMO
DUCK CAMO
DEADWOOD TREE CAMO

LOOPBACK TERRY >



BLACK PMS BLACK C
CHARCOAL HEATHER PMS 433 C
ATHLETIC HEATHER PMS 429 C
WHITE
INDIGO 19-4028 TCX
PORT 18-1420 TCX
OLIVE 17-0613 TCX
HARVEST GOLD 14-1036 TCX



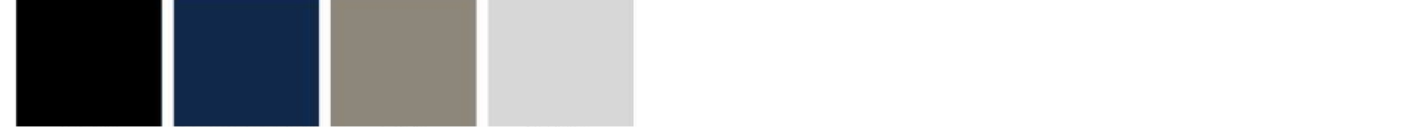
SAND 14-1106 TCX
BONE 11-0107 TCX
MISTY BLUE 17-4021 TCX
ROSE 14-1506 TCX

CALIFORNIA WAVE WASH >



BLACK PMS BLACK C
SHADOW 18-5204 TCX
SAGE 16-5304 TCX
MISTY BLUE 17-4021 TCX
DUSTY ROSE 17-1520 TCX
BLUSH 13-1408 TCX
BONE 11-0105 TCX
FOREST CAMO HEATHER
BLACK CAMO HEATHER

NEW PERFORM ACTIVEWEAR >



BLACK PMS BLACK C
CLASSIC NAVY PMS 7547 C
PINE PMS 416 C
SMOKE PMS 2330 C

SPECIAL BLEND >



BLACK PMS BLACK C
CARBON HEATHER PMS 433 C
NICKEL HEATHER PMS 424 C
MIDNIGHT HEATHER PMS 534 C
CLASSIC NAVY PMS 5395 C
MAROON PMS 490 C
CRIMSON HEATHER PMS 209 C
MOSS HEATHER PMS 3305 C
PACIFIC HEATHER PMS 278 C



POMEGRANATE HEATHER PMS 703 C
SEA GREEN HEATHER PMS 563 C
STONE HEATHER 14-4002 TCX
STORM BLUE HEATHER PMS 2166 C
ORCHID HEATHER PMS 5015 C
FOREST CAMO HEATHER
RED BUFFALO PLAID



PIGMENT DYE >



PIGMENT BLACK PMS BLACK 7 C	PIGMENT MAROON PMS 4985 C	PIGMENT SLATE BLUE PMS 647 C	PIGMENT ALPINE GREEN PMS 5545 C	PIGMENT SANDSTONE PMS 7503 C	PIGMENT LIGHT BLUE PMS 7453 C	PIGMENT MINT PMS 563 C	PIGMENT PINK PMS 190 C	PIGMENT YELLOW PMS 1205 C
---------------------------------------	-------------------------------------	--	---	--	---	----------------------------------	----------------------------------	-------------------------------------



PIGMENT ARMY PMS 4228 C	PIGMENT AMBER PMS 1675 C	PIGMENT PLUM PMS 4284 C	PIGMENT CLAY PMS 2328 C	PIGMENT CEMENT PMS 4270 C	PIGMENT SAGE PMS 5517 C	PIGMENT DUSTY PINK PMS 7605 C	PIGMENT IVORY PMS 4240 C
-----------------------------------	------------------------------------	-----------------------------------	-----------------------------------	-------------------------------------	-----------------------------------	---	------------------------------------

TIE DYE >



TIE DYE BLACK	TIE DYE NAVY	TIE DYE AQUA BLUE	TIE DYE PINK	TIE DYE DUSTY PINK	TIE DYE OLIVE	TIE DYE COTTON CANDY	TIE DYE SUNSET SWIRL
----------------------	---------------------	--------------------------	---------------------	---------------------------	----------------------	-----------------------------	-----------------------------

MINERAL WASH >



MINERAL WASH BLACK

WATER RESISTANT SOFT SHELL >



BLACK PMS BLACK C	GRAPHITE COOL GREY 11 C
-----------------------------	-----------------------------------

POLY-TECH WATER RESISTANT FLEECE >



BLACK PMS BLACK C	GUNMETAL HEATHER PMS 424 C	WHITE	CLASSIC NAVY PMS 5395 C	BRICK RED PMS 201 C	ASTER BLUE PMS 300 C	CORAL PMS 191 C
-----------------------------	--------------------------------------	--------------	-----------------------------------	-------------------------------	--------------------------------	---------------------------

LIGHTWEIGHT WINDBREAKER >



SMOKE COOL GREY 1 C	GRAPHITE COOL GREY 11 C	BLACK PMS BLACK C	CLASSIC NAVY PMS 5395 C	ROYAL PMS 287 C	MAROON PMS 490 C	RED PMS 200 C	ARMY PMS 4228 C	SADDLE PMS 2319 C
-------------------------------	-----------------------------------	-----------------------------	-----------------------------------	---------------------------	----------------------------	-------------------------	---------------------------	-----------------------------



AQUA PMS 550 C	BLUSH PMS 196 C	SAFETY YELLOW 13-0443 TCX	SAFETY ORANGE 16-1364 TCX	FOREST CAMO	BLACK CAMO	WHITE CAMO
--------------------------	---------------------------	-------------------------------------	-------------------------------------	--------------------	-------------------	-------------------

WATER RESISTANT NYLON >



BLACK PMS BLACK C	GRAPHITE COOL GREY 11 C	CLASSIC NAVY PMS 5395 C	CLASSIC KHAKI 13-0607 TPX	FOREST CAMO	BLACK CAMO
-----------------------------	-----------------------------------	-----------------------------------	-------------------------------------	--------------------	-------------------

FLANNEL >



CHAR. HEATHER / BLACK PMS 433 C	GREY HEATHER / BLACK PMS 433 C	OLIVE / BLACK PMS 4218 C	RED / BLACK PMS 207 C
---	--	------------------------------------	---------------------------------

CANVAS WORKWEAR >



BLACK PMS BLACK C	SADDLE PMS 2319 C
-----------------------------	-----------------------------

WATERPROOF POLYESTER >



BLACK PMS BLACK C	BLACK / CHECKER STRAP	POLKA DOT	CHEETAH	BLACK CHEETAH	SOUTHWEST	TIGER CAMO	FOREST CAMO	BLACK CAMO
-----------------------------	------------------------------	------------------	----------------	----------------------	------------------	-------------------	--------------------	-------------------



WHITE CAMO



www.independenttradingco.com

HEADQUARTERS

1341 Calle Avanzado
San Clemente, CA 92673

toll free: 877.366.9911
phone: 949.366.9911
fax: 949.366.5488
info@independenttradingco.com

DISTRIBUTION CENTERS

WEST COAST 4150 North Palm St.
Fullerton, CA 92835

EAST COAST 1511 N. Park Drive
Hazle Township, PA 18202



U.S. DISTRIBUTORS

S&S ACTIVEWEAR



Nevada, Florida, Georgia, Illinois,
Kansas, Ohio, Pennsylvania,
Texas
toll free: 800.523.2155
phone: 630.679.9940
fax: 630.679.9941
ssactivewear.com

MISSION IMPRINTABLES



California
San Diego, Ca.
phone: 800.480.0800
missionimprintables.com

SUN APPAREL



California, Hawaii, Kentucky,
Nevada
phone: 877.478.6364
www.sun-apparel.com

SLC ACTIVEWEAR



Utah
phone: 888.557.0799
www.slactivewear.com

INTERNATIONAL DISTRIBUTORS

AUSTRALIA



4128 DISTRIBUTION
phone: (04) 23086784
email: info@4128.com.au
4128.com.au

BRAZIL



BLANKS CO.
+55 11 97481-4082
contato@blanksco.com.br
@blanksco_original
www.blanksco.com.br

CANADA



PRIVATE AGENT DND
Montreal
phone: 450.356.3440
info@privateagentdnd.com
www.privateagentdnd.com

CANADA



S&S CANADA
Calgary, Toronto, Vancouver
phone: (800) 711-1600
en-ca.ssactivewear.com

JAPAN



VIA TRANSPORTS
phone: +81-3-3792-4116
sales@anytees.com
www1.anytees.com

MEXICO



DIMEO CLOTHING COMPANY
phone: 01(800) 822-2285 01
(33) 3628 8825 /
3628 8866 / 3634 8035 / 3634
8646
direccion@dimeo.mx
www.dimeo.mx

UNITED KINGDOM



BUFFALO TRADING
contact@buffalotrading.co.uk
www.buffalotrading.co.uk

SOCIAL MEDIA

@Independenttradingcompany

/IndependentTradingCompany

Independent Trading Company

@independenttradingco





INDEPENDENT TRADING COMPANY
Quality Sweatshirts
2025