

# FALL WINTER 2024

TEAM GUIDE

  
LIVE IN WATER











# FALL WINTER 2024

Dolfin Swimwear has provided high quality swimwear and equipment to athletes of all levels for over 70 years. With athletes at the forefront of everything we do, we create products with a purpose. Dolfin strives to offer swimwear and accessories that enhance your swim experiences and help you and your team achieve your goals.



@dolfinswimwear

## TABLE OF CONTENTS

4 Technical Suits

6 Team Suits

20 Sublimation

24 Basics

30 Team Gear

34 Ugliers

40 Little Dolfin

46 Accessories

54 Sizing



# DOLFIN **FIRSTSTRIKE**<sup>®</sup>

## FOUNDATION TECHNICAL RACEWEAR

FirstStrike is FINA approved and USA Swimming approved for all ages, making it a great choice for any swimmer, especially those 12 and under. Providing zoned muscle control and energy return, swimmers are competition ready in this lightweight racing suit.

**FABRIC:** 71% Micro Nylon/29% Spandex



UV  
PROTECTION



CHLORINE  
RESISTANT



PILLING  
RESISTANT



MUSCLE  
CONTROL



LOW  
PROFILE



WATER  
REPELLENT



QUICK  
DRY





475D ROYAL

790D BLACK

# KNEE SUIT

0A30SLD

**FEATURES:** FINA and USSSA approved for all ages, UPF 50+.  
**FABRIC:** 71% Micro Nylon, 29% Spandex  
**SIZES:** 18-34



475D ROYAL

790D BLACK

# JAMMER

8530SLD

**FEATURES:** FINA and USSSA approved for all ages, UPF 50+.  
**FABRIC:** 71% Micro Nylon, 29% Spandex  
**SIZES:** 18-34





# TEAM SUITS

Every millisecond counts in the pool. Count on Reliance® and XtraSleek™ competition suits - your team's competitive edge in the water.



# RELIANCE®

**FEATURES:** Known for its ultimate reliability while providing optimal comfort.

**FABRIC:** 100% Polyester



**SHAPE  
RETENTION**



**PILLING  
RESISTANT**



**BREATHABLE**



**UPF 50+**



**CHLORINE  
RESISTANT**



**QUICK DRY**

## NEW PRINTS:

Summit ^



## AVAILABLE PRINTS:

Forcefield ^



Available through  
Spring 2025

Razor \*^



Atomic \*^



# XtraSleek™

**FEATURES:** Known for its sharp resolution prints and bright, intense color contrast.

**FABRIC:** 78% Recycled Nylon/22% Spandex  
or 80% Nylon/20% Spandex



**SHAPE  
RETENTION**



**PILLING  
RESISTANT**



**BREATHABLE**



**UPF 50+**



**CHLORINE  
RESISTANT**



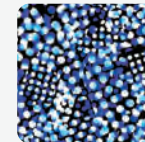
**QUICK DRY**

## AVAILABLE PRINTS:

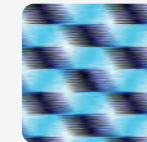
Implode



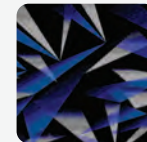
Propel \*



Sonar \*



Galactic\*



Available through  
Spring 2025

\* While supplies last

^ Available in extended sizes



TEAM BACK STYLES



**DOUBLE X BACK** 6A00SLD



**DBX BACK** 9582C | 5M00 | 9974C | 0231



**V-BACK** 0531 | 9615L | 111VB | 0100



**HP BACK** 7515L



**RELIANCE®**  
100% POLYESTER



2 YEAR PRINT

**FORCEFIELD<sup>▲</sup>**  
C53D

0100: V-Back  
8000: Jammer  
7100: Racer



**RAZOR<sup>\*▲</sup>**  
C58D

5M00: DBX Back  
5N00: Jammer  
7100: Racer



**ATOMIC<sup>\*▲</sup>**  
B38D

6A00: Double X Back  
5M00: DBX Back  
5N00: Jammer  
5P00: Racer



**COLOR BLOCK**  
958D

9974C: DBX Back  
8974C: Jammer

**XTRASLEEK™**

78% RECYCLED NYLON/22% SPANDEX



2 YEAR PRINT

**IMplode**  
C62D

0231: DBX Back  
8D31: Jammer



**PROPEL<sup>\*</sup>**  
C66D

0531: V-Back  
7031: Jammer



**SONAR<sup>\*</sup>**  
B44D

0231: DBX Back  
7031: Jammer

\* While supplies last

▲ Available in extended sizes



**RELIANCE®**  
100% POLYESTER



NEW

**SUMMIT^**  
C93D

0100SM: V-Back  
8D00SM: Jammer  
7100SM: Racer



2 YEAR PRINT

**FORCEFIELD^**  
C06D

0100: V-Back  
8D00: Jammer  
7100: Racer



**RAZOR\*^**  
010D

5M00: DBX Back  
5N00: Jammer  
7100: Racer



**ATOMIC\*^**  
B43D

6A00: Double X Back  
5M00: DBX Back  
5N00: Jammer  
5P00: Racer

**XTRASLEEK™**

78% RECYCLED NYLON/22% SPANDEX



2 YEAR PRINT

**IMPLODE**  
C15D

0231: DBX Back  
8D31: Jammer



**PROPEL\***  
C02D

0531: V-Back  
7031: Jammer



**SONAR\***  
B45D

0231: DBX Back  
7031: Jammer



**GALACTIC\***  
A32D

0531: V-Back  
7031: Jammer

\* While supplies last

▲ Available in extended sizes



**RELIANCE®**  
100% POLYESTER



**SOLID ROYAL**  
475D

9582C: DBX Back  
111VB: V-Back  
6A00SLD: Double X Back  
8150C: Jammer  
7150C: Racer



**SOLID NAVY**  
490D

9582C: DBX Back  
111VB: V-Back  
6A00SLD: Double X Back  
8150C: Jammer  
7150C: Racer



**COLOR BLOCK**  
946D

9974C: DBX Back  
8974C: Jammer

**XTRASLEEK™**  
80% NYLON/20% SPANDEX



**SOLID ROYAL**  
475D

9615L: V-Back  
7515L: HP Back  
8900L: Jammer  
7900L: Racer



**SOLID NAVY**  
490D

9615L: V-Back  
7515L: HP Back  
8900L: Jammer  
7900L: Racer

\* While supplies last

▲ Available in extended sizes

**RELIANCE®**  
100% POLYESTER



NEW

**SUMMIT ^**  
C95D

0100SM: V-Back  
8000SM: Jammer  
7100SM: Racer



2 YEAR PRINT

**FORCEFIELD ^**  
C05D

0100: V-Back  
8000: Jammer  
7100: Racer



**RAZOR \* ^**  
011D

5M00: DBX Back  
5N00: Jammer  
7100: Racer



**ATOMIC \* ^**  
B58D

6A00: Double X Back  
5M00: DBX Back  
5N00: Jammer  
5P00: Racer

▲

**XTRASLEEK™**

78% RECYCLED NYLON/22% SPANDEX



2 YEAR PRINT

**IMPLODE**  
C12D

0231: DBX Back  
8031: Jammer



**PROPEL \***  
C01D

0531: V-Back  
7031: Jammer



**SONAR \***  
B56D

0231: DBX Back  
7031: Jammer



**GALACTIC \***  
A33D

0531: V-Back  
7031: Jammer

\* While supplies last

▲ Available in extended sizes



## GREEN

**RELIANCE®**  
100% POLYESTER



### **SOLID GREEN** 585D

9582C: DBX Back  
8150C: Jammer  
7150C: Racer

### **COLOR BLOCK** 947D

9974C: DBX Back  
8974C: Jammer



**RELIANCE®**

100% POLYESTER



NEW

**SUMMIT<sup>▲</sup>**  
C94D

0100SM: V-Back  
8D00SM: Jammer  
7100SM: Racer



2 YEAR PRINT

**FORCEFIELD<sup>▲</sup>**  
C07D

0100: V-Back  
8D00: Jammer  
7100: Racer



**RAZOR<sup>\*▲</sup>**  
012D

5M00: DBX Back  
5N00: Jammer  
7100: Racer



**ATOMIC<sup>\*▲</sup>**  
B39D

6A00: Double X Back  
5M00: DBX Back  
5N00: Jammer  
5P00: Racer

**XTRASLEEK™**

78% RECYCLED NYLON/22% SPANDEX



2 YEAR PRINT

**IMPLODE**  
C14D

0231: DBX Back  
8D31: Jammer



**GALACTIC<sup>\*</sup>**  
A35D

0531: V-Back  
7031: Jammer

\* While supplies last

▲ Available in extended sizes



**RELIANCE®**  
100% POLYESTER



**SOLID RED**  
250D

- 9582C: DBX Back
- 111VB: V-Back
- 6A00SLD: Double X Back
- 8150C: Jammer
- 7150C: Racer



**COLOR BLOCK**  
721D

- 9974C: DBX Back
- 8974C: Jammer

**XTRASLEEK™**  
80% NYLON/20% SPANDEX



**SOLID RED**  
250D

- 9615L: V-Back
- 7515L: HP Back
- 8900L: Jammer
- 7900L: Racer

**RELIANCE®**  
100% POLYESTER



**RAZOR \* ▲**  
C56D

5M00: DBX Back  
5N00: Jammer  
7100: Racer



**ATOMIC \* ▲**  
B41D

6A00: Double X Back  
5M00: DBX Back  
5N00: Jammer  
5P00: Racer

**XTRASLEEK™**

78% RECYCLED NYLON/22% SPANDEX



**PROPEL \***  
C64D

0531: V-Back  
7031: Jammer



**SONAR \***  
B57D

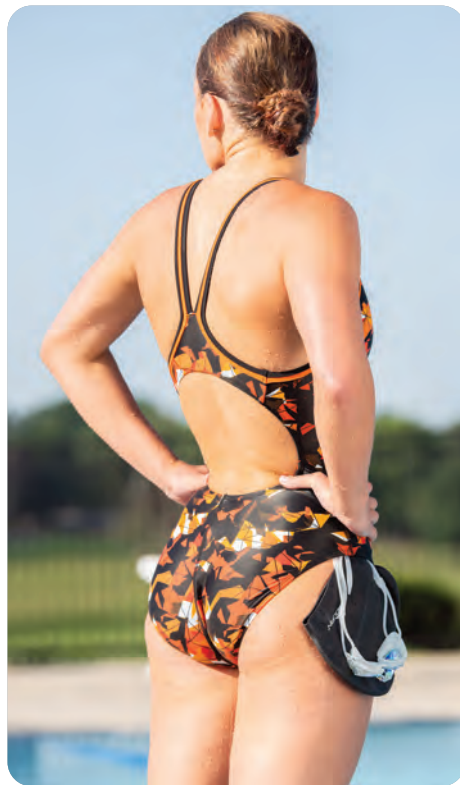
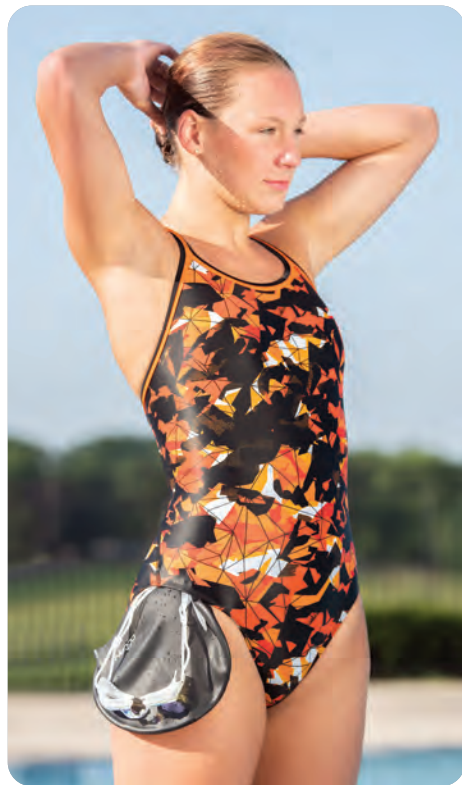
0231: DBX Back  
7031: Jammer

\* While supplies last

▲ Available in extended sizes







## ORANGE

### XTRASLEEK™

78% RECYCLED NYLON/22% SPANDEX



2 YEAR PRINT

### IMPLODE C61D

0231: DBX Back  
8D31: Jammer

## MAROON

### RELIANCE® 100% POLYESTER



### SOLID MAROON 270D

9582C: DBX Back  
8150C: Jammer  
7150C: Racer

### XTRASLEEK™

80% NYLON/20% SPANDEX



### SOLID MAROON\* 270D

8900L: Jammer

\* While supplies last

**RELIANCE®**  
100% POLYESTER



NEW  
**SUMMIT ▲**  
C96D

0100SM: V-Back  
8D00SM: Jammer  
7100SM: Racer



**SOLID PURPLE**  
290D

9582C: DBX Back  
8150C: Jammer  
7150C: Racer



**COLOR BLOCK**  
713D

9974C: DBX Back  
8974C: Jammer

**XTRASLEEK™**

78% RECYCLED NYLON/22% SPANDEX, OR 80% NYLON/20% SPANDEX



**GALACTIC\***  
A34D

0531: V-Back  
7031: Jammer



**SOLID PURPLE\***  
290D

8900L: Jammer

\* While supplies last

▲ Available in extended sizes



## NAVY/GOLD

### RELIANCE®

100% POLYESTER



2 YEAR PRINT

### FORCEFIELD<sup>^</sup> C04D

0100: V-Back  
8D00: Jammer  
7100: Racer



### COLOR BLOCK 957D

9974C: DBX Back  
8974C: Jammer

### XTRASLEEK™

78% RECYCLED NYLON/22% SPANDEX



2 YEAR PRINT

### IMPLODE C13D

0231: DBX Back  
8D31: Jammer

▲ Available in extended sizes

## BLACK

### RELIANCE®

100% POLYESTER



### SOLID BLACK 790D

9582C: DBX Back  
111VB: V-Back  
6A00SLD: Double X Back  
8150C: Jammer  
7150C: Racer

### XTRASLEEK™

80% NYLON/20% SPANDEX



### SOLID BLACK 790D

9615L: V-Back  
7515L: HP Back  
8900L: Jammer  
7900L: Racer



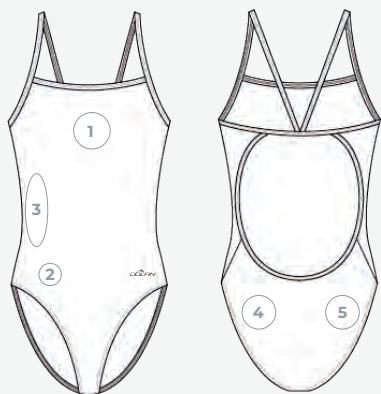
# SUBLIMATION

Creating your team or swim school look has never been easier! With multiple preset prints and patterns to choose from, your team will stand out on the pool deck.

Contact your Dolfin Sales Representative or visit [team.dolfinswimwear.com](https://team.dolfinswimwear.com) to get started today!



# 1. SELECT YOUR STYLE

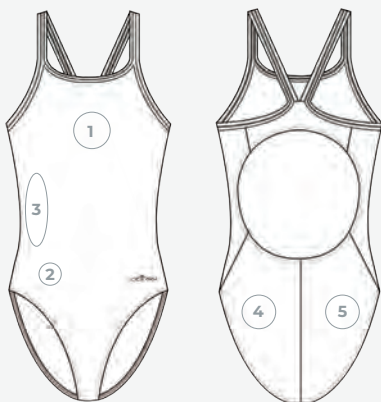


## STRING BACK 8SB8000

SIZES: 22-40

### LOGO LOCATIONS

1. Center Chest
2. Front Right Hip
3. Right Side
4. Back Left
5. Back Right

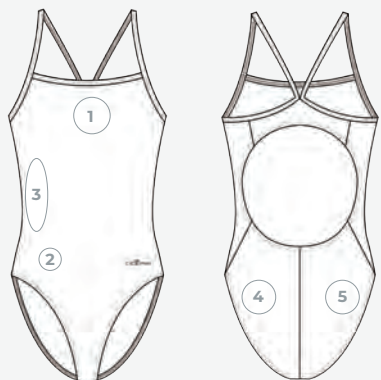


## DBX BACK 8SB8001

SIZES: 18-44

### LOGO LOCATIONS

1. Center Chest
2. Front Right Hip
3. Right Side
4. Back Left
5. Back Right

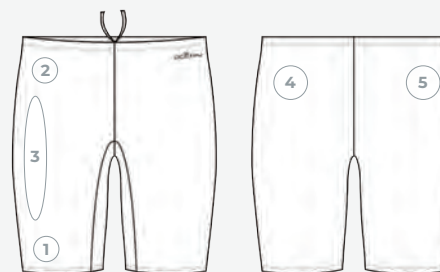


## V-BACK 8SB8002

SIZES: 18-44

### LOGO LOCATIONS

1. Center Chest
2. Front Right Hip
3. Right Side
4. Back Left
5. Back Right



## JAMMER 8SB8004

SIZES: 18-46

### LOGO LOCATIONS

1. Front Lower Right Leg
2. Front Right Hip
3. Right Side
4. Back Left
5. Back Right



## RACER 8SB8005

SIZES: 22-42

### LOGO LOCATIONS

1. Front Right Hip
2. Back Left
3. Back Right

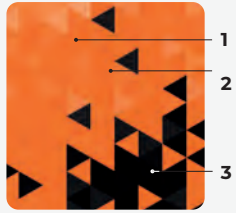


## BACKPACK B2300D

### LOGO LOCATIONS

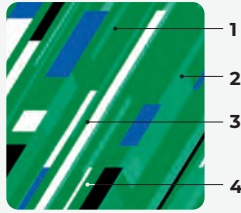
1. Center Front Panel
2. Left Shoulder Strap

## 2. SELECT YOUR PRINT



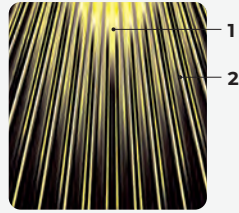
### REFRACTOR

UP TO 3 COLORS  
THREE MAIN  
Color 1. Tangerine  
Color 2. Orange  
Color 3. Black



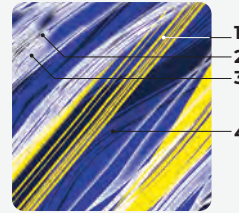
### LUNAR

UP TO 4 COLORS  
ONE MAIN  
Color 1. Kelly Green  
THREE ACCENT  
Color 2. Royal  
Color 3. White  
Color 4. Black



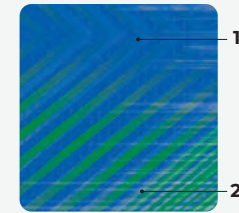
### FLARE

UP TO 2 COLORS  
ONE MAIN  
Color 1. Yellow  
ONE ACCENT  
Color 2. Black



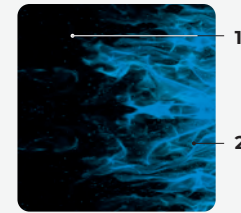
### HAZE

UP TO 4 COLORS  
TWO MAIN  
Color 1. Black  
Color 2. Yellow  
TWO ACCENT  
Color 3. White  
Color 4. Gray



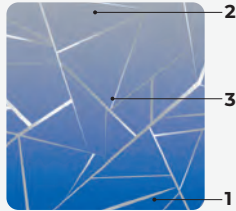
### JOLT

UP TO 2 COLORS  
ONE MAIN  
Color 1. Royal  
ONE ACCENT  
Color 2. Kelly Green



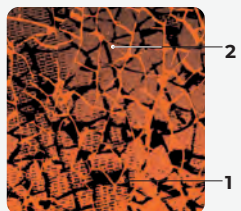
### IGNITE

UP TO 2 COLORS  
TWO MAIN  
Color 1. Black  
Color 2. Electric Blue



### FRACTURE

UP TO 3 COLORS  
TWO MAIN  
Color 1. Royal  
Color 2. Gray  
ONE ACCENT  
Color 3. White



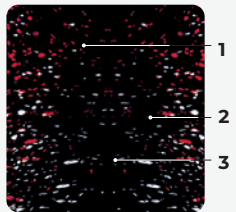
### COLLIDE

UP TO 2 COLORS  
TWO MAIN  
Color 1. Orange  
Color 2. Black



### LOGO REPEAT

UP TO 1 COLOR  
ONE MAIN  
Color 1. Red  
(Background)



### BURST

UP TO 3 COLORS  
ONE MAIN  
Color 1. Black  
TWO ACCENT  
Color 2. Red  
Color 3. White

## 3. SELECT YOUR COLORS

### SUBLIMATED COLORS



### BINDING / STRAP COLORS



### LINER COLORS





## REFRACTOR

8SB8002: V-Back  
8SB8004: Jammer  
8SB8005: Racer



## LUNAR

8SB8002: V-Back  
8SB8004: Jammer  
8SB8005: Racer



## FLARE

8SB8002: V-Back  
8SB8004: Jammer  
8SB8005: Racer



## HAZE

8SB8001: DBX Back  
8SB8004: Jammer  
8SB8005: Racer



## JOLT

8SB8000: String Back  
8SB8004: Jammer  
8SB8005: Racer



## IGNITE

8SB8001: DBX Back  
8SB8004: Jammer  
8SB8005: Racer



## FRACTURE

8SB8000: String Back  
8SB8004: Jammer  
8SB8005: Racer



## COLLIDE

8SB8001: DBX Back  
8SB8004: Jammer  
8SB8005: Racer



## LOGO REPEAT

8SB8000: String Back  
8SB8004: Jammer  
8SB8005: Racer



## BURST

8SB8001: DBX Back  
8SB8004: Jammer  
8SB8005: Racer





# BASICS

Dolfin Basics offers a full collection of solid and color block options for both men and women. With a mix of training and lifestyle suits, basics offers a wide range of products for everyone.



## TIE BACK

6F10SLD

**FEATURES:** All over solid, fully lined suit with performance leg cut. Adjustable string tie back with open back detail. UPF 50+.  
**FABRIC:** 91% Polyester, 9% Spandex  
**SIZES:** 22-40



790D  
BLACK



490D  
NAVY



## PERFORMANCE BACK

7707S

**FEATURES:** Color blocked, front lined only suit with performance leg cut. UPF 50+.  
**FABRIC:** 91% Polyester, 9% Spandex  
**SIZES:** 22-40



946D  
BLACK/ROYAL



947D  
BLACK/GREEN



949D  
BLACK/RED



950D  
BLACK/PURPLE



954D  
BLACK/MAGENTA





475D ROYAL



250D RED



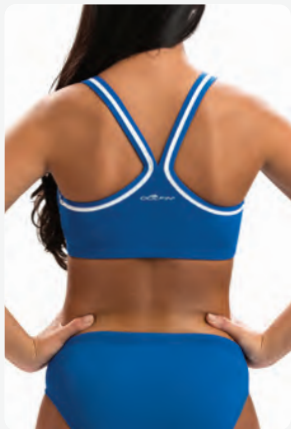
490D NAVY



790D BLACK

**PERFORMANCE BACK**  
7482S

**FEATURES:** Front lined suit with performance leg cut. UPF 50+.  
**FABRIC:** 91% Polyester, 9% Spandex  
**SIZES:** 22-40



**BIKINI TOP** 6582C

**FEATURES:** Fully lined bikini top. UPF 50+.  
**FABRIC:** 100% Polyester  
**SIZES:** XS-XL



475D ROYAL

250D RED

490D NAVY

790D BLACK



**TANKINI TOP** 6584C

**FEATURES:** Fully lined tankini top with shelf bra. UPF 50+.  
**FABRIC:** 100% Polyester  
**SIZES:** XS-XL



475D ROYAL

250D RED

490D NAVY

790D BLACK



**BIKINI BOTTOM** 6583C

**FEATURES:** Fully lined bikini bottom. UPF 50+.  
**FABRIC:** 100% Polyester  
**SIZES:** XS-XL



475D ROYAL

250D RED

490D NAVY

790D BLACK





## SOLID JAMMER S8109

**FEATURES:** Jammer with front panel liner and internal drawcord. UPF 50+.

**FABRIC:** 91% Polyester, 9% Spandex

**SIZES:** 18-40



790D  
BLACK



## COLOR BLOCK JAMMER 8107S

**FEATURES:** Color block jammer with front panel liner and internal drawcord. UPF 50+.

**FABRIC:** 91% Polyester, 9% Spandex

**SIZES:** 22-40



946D  
BLACK/ROYAL

949D  
BLACK/RED



## 5" SHORT 9060N

**FEATURES:** Nylon short with attached brief, side pockets, and internal drawcord.

**FABRIC:** 100% Nylon

**SIZES:** S-XXXL



475D  
ROYAL

250D  
RED

490D  
NAVY

790D  
BLACK



## 9" BOARD SHORT 9780P

**FEATURES:** Short with attached brief, side pockets, and external drawcord.

**FABRIC:** 100% Polyester

**SIZES:** S-XXL



475D  
ROYAL

250D  
RED

490D  
NAVY

790D  
BLACK



## YOUTH WATER SHORT 9060Y

**FEATURES:** Nylon short with attached brief, side pockets, and internal drawcord.

**FABRIC:** 100% Nylon

**SIZES:** YS-YL



475D  
ROYAL

250D  
RED

490D  
NAVY

790D  
BLACK



## WOMEN'S RASH GUARD 5100SLD

**FEATURES:** Rash guard with crew neck. Not lined. UPF 50+.

**FABRIC:** 100% Polyester

**SIZES:** XS-XXL



475D  
ROYAL

250D  
RED

490D  
NAVY

100D  
WHITE\*

\* While supplies last



## MEN'S RASH GUARD 5200SLD

**FEATURES:** Rash guard with crew neck. Not lined. UPF 50+.

**FABRIC:** 100% Polyester

**SIZES:** XS-XXL



475D  
ROYAL

250D  
RED

490D  
NAVY

100D  
WHITE\*

\* While supplies last



## UNISEX RASH GUARD U400SLD

**FEATURES:** Short sleeve rash guard with crew neck. Not lined. UPF 50+.

**FABRIC:** 52% Polyester/48% PBT

**SIZES:** XS-XXL Sizing based on men's rash guard sizing (pg. 54).



475D  
ROYAL

490D  
NAVY

790D  
BLACK

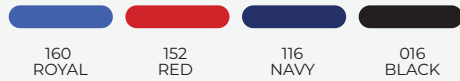


## WOVEN SWIM SHORT PSH01

**FEATURES:** Cover up short in polyester woven fabric with back pocket and waistband. UPF 50+

**FABRIC:** 100% Polyester

**SIZES:** YXS-YL, XS-2XL



## KNIT SHORT 61SH

**FEATURES:** Shorts with elastic waistband.

**FABRIC:** 50% Cotton, 50% Spandex

**SIZES:** AXS-2XL

**COLORS:** VA5 Oxford, 016 Black, 068 Gold, 088 Kelly Green, 32C Dark Green, 110 Maroon, 116 Navy, 124 Orange, 140 Pink, 148 Purple, 152 Red, 160 Royal, 180 White



## RETRO KNIT SHORT PSH02

**FEATURES:** Knit short with contrast white binding and elastic waistband.

**FABRIC:** 50% Cotton, 50% Polyester

**SIZES:** YXS-YL, XS-2XL



## CLASSIC GYM SHORT PS001

**FEATURES:** Polyester / Spandex blend short with white binding, light weight braided drawcord, and solid black mesh side panel. Includes built in brief.

**FABRIC:** 97% Polyester, 3% Spandex

**SIZES:** AXS-A3XL







# TEAM GEAR

Stay warm while on deck with Dolfin's line of breathable and lightweight warm-ups and swim parkas. With embellishment options available, your team suits aren't the only way to stand out from the competition!



475D ROYAL



250D RED



490D NAVY



790D BLACK

## PARKA U317SLD

**FEATURES:** Unisex, plush fleece lined parka with pockets, drawcord, and breathable vents with internal mesh lining. Lightweight & water resistant, embellishments available.  
**FABRIC:** 100% Polyester  
**SIZES:** XXS-XXL



BREATHABLE VENTS



INTERIOR POCKET



FRONT POCKETS





WB3  
ROYAL/WHITE



WA1  
RED/WHITE



VX2  
NAVY/WHITE



X43  
BLACK/WHITE

## JACKET

WUJ03D

**FEATURES:** Unisex, slim fit color blocked warm-up jacket with full zipper, two pockets, and two white stripes at sleeve. Lightweight, embellishments available.

**FABRIC:** 95% Polyester, 5% Spandex

**SIZES:** YXS-YL, XS-XXL



160  
ROYAL



152  
RED



116  
NAVY



016  
BLACK

## JACKET

WUJ02D

**FEATURES:** Unisex, slim fit solid warm-up jacket with full zipper and two pockets. Lightweight, embellishments available.

**FABRIC:** 95% Polyester, 5% Spandex

**SIZES:** YXS-YL, XS-XXL





160  
ROYAL



152  
RED



116  
NAVY



016  
BLACK

**PANT**  
WUP01D

**FEATURES:** Unisex, slim fit warm-up pants with drawcord at waistband, two pockets, and two zippers at leg openings. Lightweight, embellishments available.  
**FABRIC:** 95% Polyester, 5% Spandex  
**SIZES:** YXS-YL, XS-XXL



# uglies®

Uglies are the most popular training suits on the market, combining impeccable fit with fun, colorful, and crazy prints. Let your personality shine in the water!



FABRIC: 91% Polyester/9% Spandex



CHLORINE RESISTANT



SHAPE RETENTION

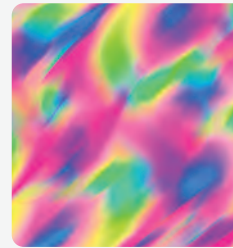


COLOR RETENTION



UPF 50%

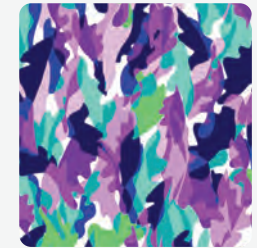
NEW SEASONAL PRINTS:



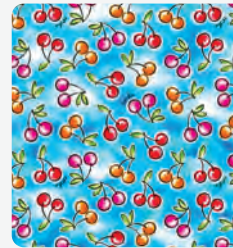
HZ-D05D  
HAZE



BC-D06D  
BUTTERCUP



HO-D08D  
HIDEOUT

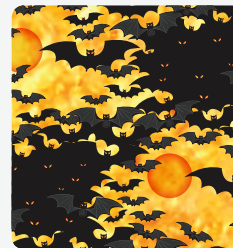


WC-D11D  
WILD CHERRY

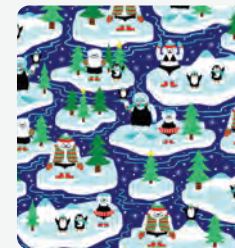


HB-D12D  
HEARTBREAKER

LIMITED EDITION PRINTS:



BD-D14D  
BAT DANCE



YP-D15D  
YETI PLUNGE





**V-BACK**  
0510

**FEATURES:** V-back straps with open keyhole back detail. Performance leg cut. Signature Ugliers Candy Stripe binding, fully lined with coordinating color. UPF 50+.  
**FABRIC:** 91% Polyester, 9% Spandex  
**SIZES:** 22-40



HZ-D05D  
HAZE



BC-D06D  
BUTTERCUP



HO-D08D  
HIDEOUT



WC-D11D  
WILD CHERRY



BD-D14D  
BAT DANCE

LIMITED EDITION



YP-D15D  
YETI PLUNGE

LIMITED EDITION



**STRING  
BACK**  
0310

**FEATURES:** String back straps with open keyhole back detail. Performance leg cut. Signature Ugliers Candy Stripe binding, fully lined with coordinating color. UPF 50+.  
**FABRIC:** 91% Polyester, 9% Spandex  
**SIZES:** 22-40



HB-D12D  
HEARTBREAKER

## NEW!

Introducing new, electrifying color block and solid options in our most popular suit style, guaranteed to make you stand out!



230D  
PINK

NEW COLOR BLOCK

### V-BACK

7610SLD

**FEATURES:** New color block suit in your favorite silhouette! V-back straps with open keyhole back detail and performance leg cut. Signature Uglier Candy Stripe binding, fully lined with coordinating color. UPF 50+.  
**FABRIC:** 91% Polyester, 9% Spandex  
**SIZES:** 22-40



290D  
PURPLE

NEW SOLID

### V-BACK

0510SLD

**FEATURES:** New solid color suit in your favorite silhouette! V-back straps with open keyhole back detail and performance leg cut. Fully lined with coordinating color. UPF 50+.  
**FABRIC:** 91% Polyester, 9% Spandex  
**SIZES:** 22-40





HZ-D05D  
HAZE



HO-D08D  
HIDEOUT



BD-D14D  
BAT DANCE

LIMITED EDITION



YP-D15D  
YETI PLUNGE

LIMITED EDITION

## JAMMER 7010

**FEATURES:** Front panel lined jammer with print and solid color block mixing or all over print. Internal drawcord for added security. UPF 50+.  
**FABRIC:** 91% Polyester, 9% Spandex  
**SIZES:** 22-38







**GIRLS'**  
**CRISS-CROSS**  
**BACK** 9510U

**FEATURES:** Fully lined, one piece printed suit with Signature Ugliers Candy Stripe Binding and performance leg cut. UPF 50+.  
**FABRIC:** 91% Polyester, 9% Spandex  
**SIZES:** 8-16



BC-D06D  
 BUTTERCUP



HZ-D05D  
 HAZE

Order Now. Shipping 10/1/24.



**GIRLS'**  
**CRISS-CROSS**  
**BACK** 9510SLD

**FEATURES:** Fully lined, one piece solid suit with Signature Ugliers Candy Stripe Binding and performance leg cut. UPF 50+.  
**FABRIC:** 91% Polyester, 9% Spandex  
**SIZES:** 8-16



230D  
 PINK



290D  
 PURPLE



480D  
 BLUE



560D  
 LIME



410D  
 TURQUOISE



little  
dolfin™

Our full collection of kids' swimwear includes one piece suits, swim trunks, and short sleeve rash guards.



**FABRIC:** 91% Polyester/9% Spandex,  
or 100% Polyester



**CHLORINE  
RESISTANT**



**SHAPE  
RETENTION**



**COLOR  
RETENTION**



**UPF 50%**



**HIGH VISIBILITY  
PRINTS**



**EASY ON/EASY OFF  
STYLES**

### NEW SEASONAL PRINTS:



AS-D19D  
ALPHABET SOUP



FM-D17D  
FURMAIDS



BC-D06D  
BUTTERCUP





AS-D19D  
ALPHABET SOUP



FM-D17D  
FURMAIDS



BC-D06D  
BUTTERCUP

## ONE PIECE

9810

**FEATURES:** Fully lined, printed one piece with Signature Ugliers Candy Stripe Binding and modest leg cut. Vibrant prints easy to see in the water. UPF 50+.

**FABRIC:** 91% Polyester, 9% Spandex

**SIZES:** 2T-6X

Order Now. Shipping 10/1/24.



C70D  
TANGERINE



480D  
BLUE



PNKD  
PINK



LIMD  
LIME



TURD  
TURQUOISE



290D  
PURPLE

## ONE PIECE

LD9504

**FEATURES:** Fully lined, one piece solid suit with Signature Ugliers Candy Stripe Binding and modest leg cut. Vibrant colors easy to see in the water. UPF 50+.

**FABRIC:** 91% Polyester, 9% Spandex

**SIZES:** 2T-6X



AS-D19D  
ALPHABET SOUP

**SWIM TRUNK**  
9L01

**FEATURES:** Printed swim trunk with elastic waistband for comfort, and attached brief. Vibrant prints easy to see in the water.  
**FABRIC:** 100% Polyester  
**SIZES:** 2T-4T, 4-7

Order Now. Shipping 10/1/24.



475D  
ROYAL



250D  
RED



490D  
NAVY



210D  
ORANGE

**SWIM TRUNK**  
LD225

**FEATURES:** Solid swim trunk with elastic waistband for comfort and attached brief.  
**FABRIC:** 100% Polyester  
**SIZES:** 2T-4T, 4-7



ORGD  
ORANGE



LIMD  
LIME



PNKD  
PINK



TURD  
TURQUOISE

## RASH GUARD

100RG

**FEATURES:** Unisex, medium-weight fabric rash guard with mock neck for additional coverage. Not lined. UPF 50+.

**FABRIC:** 91% Polyester, 9% Spandex

**SIZES:** 2T-7









# ACCESSORIES

Dolphin Swimwear offers a wide range of training aids and accessories. Whether you are filling your bag for practice or finding your next favorite goggle, we have it all!



## LARGE TEAM BACKPACK BP01SLD

**FEATURES:** 37 liter backpack featuring two zippered front pockets, two zippered side pockets, internal opening, adjustable straps, comfort back, and front clips. Able to be embellished.

**FABRIC:** 100% Nylon

475D  
ROYAL

790D  
BLACK



## MESH BAG MB51SLD

**FEATURES:** Mesh bag with front zippered pocket, front adjustable opening, adjustable straps, and drawstring enclosure. Able to be embellished.

**FABRIC:** 100% Polyester

475D  
ROYAL\*

\* While supplies last



## MEDIUM BACKPACK BP02SLD

**FEATURES:** Backpack with two compartments, two mesh storage side pockets, adjustable padded straps with a padded back panel and shoulder straps. Able to be embellished.

**FABRIC:** 100% Polyester

475D  
ROYAL



## SUBLIMATED BACKPACK B2300D

**FEATURES:** Customizable sublimated backpack with 600 Denier Polyester fabric. Features 3 compartments with 2 side pockets and padded shoulder straps. The secure internal laptop sleeve provides protection for your device.

**FABRIC:** 100% Polyester







## ADULT KICK BOARD 791SA

20" x 11.5"

**FEATURES:** 100% EVA foam kickboard that isolates the legs to build strength.



BLKD  
BLACK



## JUNIOR KICK BOARD 790SA

14" x 10"

**FEATURES:** 100% EVA foam kickboard that isolates the legs to build strength.



BLUD  
BLUE



## ADULT PULL BUOY 796SA

9" x 3" x 5"

**FEATURES:** 100% soft EVA foam pull buoy that helps build upper body strength.



944D  
BLACK/SILVER



## JUNIOR PULL BUOY 795SA

9" x 3" x 4"

**FEATURES:** 100% soft EVA foam pull buoy that helps build upper body strength.



536D  
BLUE/GREEN



## EAR PLUG 86EP

**FEATURES:** Soft TPR and PP material that is ergonomically designed for a gentle fit and provides effective protection.



920D  
BLUE/CLEAR \*

\* While supplies last



## NOSE CLIP 88NC

**FEATURES:** Soft TPR and Polycarbonate (PC) materials to provide maximum comfort and seal.



956D  
BLACK/BLUE \*

\* While supplies last



SF91C811  
560D LIME  
08-11 CHILD



SF91C11  
290D PURPLE  
11-01 CHILD



SF910103  
210D ORANGE  
01-03 ADULT



SF910305  
184D YELLOW  
03-05 ADULT



SF910507  
250D RED  
05-07 ADULT



SF910709  
490D NAVY  
07-09 ADULT



SF910911  
585D FOREST GREEN  
09-11 ADULT



SF911113  
700D SILVER  
11-13 ADULT

## SWIM FINs

**FEATURES:** Full foot pocket with long blade. 100% Rubber (not latex free). Color indicates size. (See page 55)





C71D  
NEON PINK



C72D  
NEON GREEN



100D  
WHITE



475D  
ROYAL



250D  
RED



290D  
PURPLE



490D  
NAVY



790D  
BLACK



700D  
SILVER \*

## SWIM CAP 890SA

FEATURES: 100% Silicone

\* While supplies last



210D  
ORANGE\*



790D  
BLACK

## SWIM CAP 880SA

FEATURES: 100% Latex

\* While supplies last



BLUD  
BLUE



C73D  
ORANGE

## YOUTH SPIKE GOGGLE GG01

FEATURES: Youth sized goggles with a leak-free fit, low profile design, quick adjust straps, and UVA / UVB protection.



230D  
PINK

## YOUTH GLITTER GOGGLE GG02

FEATURES: Youth sized goggles with a leak-free fit, low profile design, quick adjust straps, and UVA / UVB protection.





BGRD



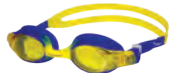
PWHD



OYWHD



BLBD



BYWD

## JUNIOR FLIPPER GOGGLE 856SA

**FEATURES:** Youth design with an easy, adjustable split head strap featuring anti-fog lenses, a hypoallergenic silicone gasket, and UVA & UVB protection.

**COLORS:** BGRD Blue/Green, BYWD Blue/Yellow, OYWD Orange/Yellow, PWHD Pink/White, BLBD Blue/Light Blue



BGOD

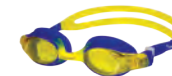


PWBD



## FLIPPER 2 PACK 856SA2

**COLORS:** BGOD Blue/Green & Orange/Yellow, PWBD Pink/White & Blue/Light Blue



BBPD

## FLIPPER 3 PACK 856SA3

**COLORS:** BBPD Blue/Green, Blue/Yellow, & Pink/White



BBRD  
BLUEBERRY



STRD  
STRAWBERRY

## FLIPPER FLOWER GOGGLE 858SA

**FEATURES:** Youth sized goggles with a leak-free fit, novelty print design, quick adjust straps, anti-fog lenses, and UVA / UVB protection.

**COLORS:** BBRD Blueberry, STRD Strawberry



BLGD



OVOD

## FLIPPER FIERCE GOGGLE 86G0FF

**FEATURES:** Youth sized goggles with a leak-free fit, novelty print design, quick adjust straps, anti-fog lenses, and UVA / UVB protection.

**COLORS:** BLGD Blusaurus Green, OVOD Oviraptor Orange



RBLD

RSID



RPKD

RPRD

## CHARGER RACING GOGGLE 616SA

**FEATURES:** These racing goggles feature a low-profile design, a hypoallergenic silicone gasket, split head strap, 3 interchangeable nose bridges, and UVA & UVB protection. These goggles are also anti-fog, FINA approved and available in mirrored and non-mirrored options.

**COLORS:** RBLD Reflex Blue, RPKD Reflex Pink, RSID Reflex Silver, RPRD Reflex Purple



BLKD

BLUD



CLRD

## VICTOR RACING GOGGLE 805SA

**FEATURES:** These goggles feature a low-profile design, a hypoallergenic silicone gasket, split head strap, 3 interchangeable nose bridges, and UVA & UVB protection. These goggles are also anti-fog and available in mirrored and non-mirrored options.

**COLORS:** BLKD Black, BLUD Blue, CLRD Clear



BCLD

BKBD



PWHD

SGRD



RYWD

## BUNGEE TRAINING GOGGLE 13B0G5

**FEATURES:** Dual-bungee wrapped strap and quick adjust cord, these training goggles provide a leak-free fit and low profile with a one piece flexible silicone design.

**COLORS:** BCLD Blue/Clear, BKBD Black/Black, PWHD Pink/White, SGRD Silver/Green, RYWD Red/Yellow



BCRD

PCSD



## BUNGEE 2 PACK 13B0G52

**FEATURES:** Dual-bungee wrapped strap and quick adjust cord, these training goggles provide a leak-free fit and low profile with a one piece flexible silicone design. Includes two pairs of goggles per pack.

**COLORS:** BCRD Blue/Clear & Red/Yellow, PCSD Pink/White, & Silver/Green



BBSD

## BUNGEE 3 PACK 13B0G53

**FEATURES:** Dual-bungee wrapped strap and quick adjust cord, these training goggles provide a leak-free fit and low profile with a one piece flexible silicone design. Includes three pairs of goggles per pack.

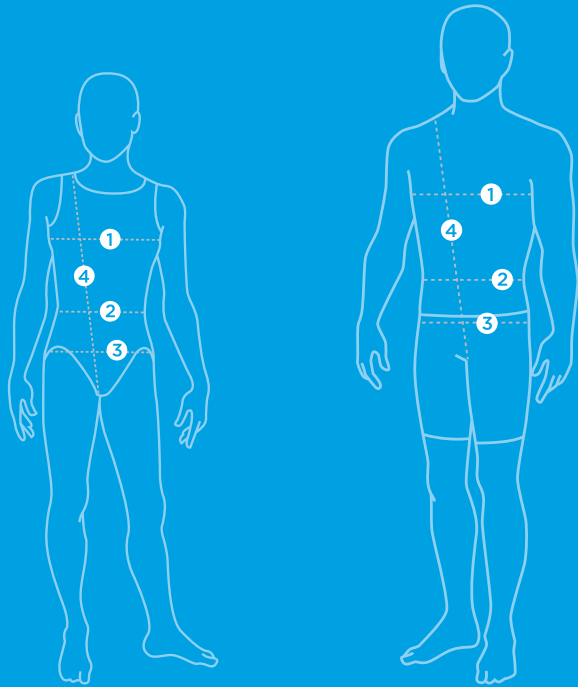
**COLORS:** Blue/Clear, Black/Black, & Silver/Green





# HOW TO MEASURE

*\*All measurements recorded in inches*



- 1 Chest Measurement:**  
Always measure at the fullest part of the chest with your arms at your side.
- 2 Waist Measurement:**  
Measure around the natural waistline, which is the narrowest part of your waist.
- 3 Hip Measurement:**  
Always measure at the fullest part of the hip standing with your feet together.
- 4 Torso Measurement:**  
Start at the shoulder, down the torso, through the legs, and return back to your starting point.

MENS				RASH GUARDS	SHORTS
COMPETE	CHEST	WAIST	HIP		
18	24	20-22	24-26	N/A	N/A
20	26	22-24	26-28	N/A	N/A
22	28	24-25	28-30	N/A	N/A
24	30	25-26	30-32	XS	S
26	32	26-28	32-33	XS	S
28	34	28-30	33-35	S	M
30	36	30-32	35-37	S	M
32	38	32-34	37-39	M	L
34	40	34-36	39-41	M	L
36	42	36-38.5	41-43	L	XL
38	44	38.5-41	43-45.5	L	XL
40	46	41-43	45.5-48	XL	XXL
42	48	43-45	48-50	XL	XXL
44	50	45-47	50-52	XXL	N/A
46	52	47-49	52-54	XXL	N/A

WOMENS					UGLIES SEPARATES	BASICS
COMPETE	CHEST	WAIST	HIP	TORSO		
18	19-20	18-19	25-26	48	N/A	N/A
20	20-22	19-20	26-27	49.5	N/A	N/A
22	22-24	20-21	27-28	51	N/A	N/A
24	24-26	21-22	28-29	52.5	N/A	N/A
26	26-28	22-23	29-31	54	N/A	N/A
28	28-30	23-24	31-33	55.5	N/A	N/A
30	30-32	24-25	33-35	57	XS	XS
32	32-34	25-27	35-37	58.5	S	S
34	34-36	27-29	37-39	60	M	M
36	36-38	29-31	39-40.5	61.5	L	L
38	38-40	31-33	40.5-42	63	XL	XL
40	40-42	33-35	42-44	64.5	N/A	N/A
42	42-44	35-37	44-46	66	N/A	N/A
44	44-46	37-39	46-48	67.5	N/A	N/A

WOMEN'S TECH SUITS					FIRSTSTRIKE
SIZE	CHEST	WAIST	HIP	TORSO	
18	25-26	20-21	31-32	51-53	18
20	26-27	21-23	32-33	53-55	20
22	27-29	23-25	33-34	55-57	22
24	29-31.5	25-27.5	34-35	57-59	24
26	31.5-34.5	27.5-29.5	35-36	59-61	26
28	34.5-37	29.5-31	36-38	61-63	28
30	37-39	31-33	38-40	63-65	30
32	39-40	33-34	40-41	65-67	32
34	40-41	34-35	41-42	67-69	34
36	41-42	35-36	42-43	69-71	N/A

MENS TECH SUITS			FIRSTSTRIKE
SIZE	WAIST	HIP	
18	23-24	29-30	18
20	24-26	30-32	20
22	26-28	32-33.5	22
24	28-30	33.5- 35	24
26	30-32	35-37	26
28	32-34	37-39	28
30	34-36	39-41	30
32	36-38.5	41-43	32
34	38.5-41	43- 45.5	34
36	41-43	45.5-47.5	N/A

WOMENS PRACTICEWEAR (W1977J, PSH01, PSH01GU, PSH02, 1933SH, 61SH)			
GROUP	SIZE	CHEST	WAIST
YOUTH	YXS	22	19
YOUTH	YS	24	21
YOUTH	YM	26	23
YOUTH	YL	28	24
ADULT	XS	32	25
ADULT	S	34	26
ADULT	M	36	28
ADULT	L	38	30
ADULT	XL	40	33
ADULT	XXL	43	36

UNISEX WARM-UPS				
GROUP	SIZE	CHEST	WAIST	HIP
YOUTH	YXS	23-25	25	27.5
YOUTH	YS	26-28	26	29.5
YOUTH	YM	29-30	27	31.5
YOUTH	YL	31-33	28-30	33.5
ADULT	XS	32-34	29-30	34.5
ADULT	S	34-36	30-31	35-37
ADULT	M	36-38	32-34	37-40
ADULT	L	38-41	35-37	41-43
ADULT	XL	42-44	38-40	43-45
ADULT	2XL	46-48	40-42	46-48

UNISEX	PARKA		
SIZE	CHEST	WAIST	HIP
XXS	23-26	19-22	24-27
XS	26-29	22-25	27-30
S	29-32	25-28	30-33
M	32-36	28-32	33-37
L	36-40	32-36	37-41
XL	40-44	36-41	41-45.5
XXL	44-48	41-45	45.5-50

YOUTH	UNISEX		
SIZE	CHEST	WAIST	HIP
2T	20	19-19.5	N/A
3T	21	20-20.5	N/A
4T	22	21-21.5	N/A
4	22	22	N/A
5	23	22.5	N/A
6	24.5	23	N/A
6X/7	26	23.5	N/A
8	27	24	28
10	28.5	25	30
12	30	26	32
14	31.5	28	34
16	33.5	30	36

Size table above used for styles WUJ02D, WUJ03D, WUP01D only

UNISEX	SWIM FIN	
SIZE	STYLE NUMBER	COLOR
08-11 CHILD	SF91C811	560D Lime
11-01 CHILD	SF91C111	290D Purple
01-03 ADULT	SF910103	210D Orange
03-05 ADULT	SF910305	184D Yellow
05-07 ADULT	SF910507	250D Red
07-09 ADULT	SF910709	490D Navy
09-11 ADULT	SF910911	585D Forest Green
11-13 ADULT	SF911113	700D Silver



Elite Sportswear  
2136 N 13th Street  
Reading, PA 19604

# FALL WINTER 2024

TEAM GUIDE

[www.dolphinswimwear.com](http://www.dolphinswimwear.com)



Style: CAT24WTG